



GRAPHENSTONE

**PRODUCT
CATALOGUE**



NATURAL PAINTS AND COATINGS

Content

Graphenstone	4-9
Introduction	4-5
The Perfect Mix	6-7
My Home is a Tree	8-9
Products	10-45
Interior Paints	10-17
Exterior Paints	18-21
Functional Paints	22-27
• Shielding	24-25
• Waterproofing	26-27
Complementary Products	28-37
• Primers	30-31
• Treatments	32-33
• Protective finishes	34-35
• Bonding and priming for mortars	36-37
The Earth Collection	38-47
Quality & Certifications	48-49
The Gallery	50
Where to find us	51

Introduction

Natural products for healthy spaces

Our company is dedicated to the design and manufacture of coatings that are respectful with people's health and the environment, in accordance with the principles of circular economy. Our product range offers certified decorative paints that contribute to improve the air quality due to their CO2 absorption capacity and low VOCs content. They are the perfect fit for certified projects, green buildings, passive Houses and smart cities.



Pioneers in sustainable building materials

We have been and still are committed to the development and creation of the most innovative and ground breaking line of natural paints and mortars using lime from the highest quality local sources. This unique lime is created using a natural and environmentally friendly production cycle. Our commitment to sustainability and the environment is accredited by the strictest and most recognized quality certificates and seals on an international level.

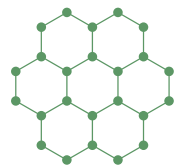
We use this technology to achieve more efficient materials that meet the requirements of today's highly demanding market which is committed to new and more sustainable methods of manufacturing.

THE PERFECT MIX

Graphenstone Technology



TRADITION + INNOVATION



ARTISANAL LIME

Most of our products contain 100% artisanal lime made in wood burning kilns, which produces a high degree of whiteness and purity; it acts also as a natural preservative.

This high quality natural lime has been produced this way since the mid-nineteenth century.



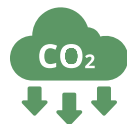
GRAPHENE

Graphenstone paints combine lime and graphene in a unique formula that we call **Graphenstone Technology**.

The lime is complemented by graphene improving its strength and flexibility. This perfect blend of tradition, innovation and technology enables us to create premium, environmentally friendly paints of the highest quality and more durable.



Breathable



Absorbs CO₂



High solar reflectance (SRI)



Maximum whiteness



Flexible



Washable



Resistant and durable



Sustainable

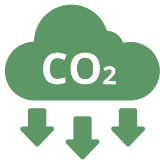
Transform your HOUSE into a TREE by painting with Graphenstone

Your house can create a healthier environment for you and your family, contribute to clean the air in cities and combat global warming. Make it happen. Let your house absorb as much CO2* as an adult tree by using Graphenstone paints. Transform your home into a tree!



Why it's important to reduce CO2?

The high concentration of CO2 in the world increases the **greenhouse effect** that is contributing to a rise in temperature on Earth. In addition, the air **pollution in cities** is causing serious concern for the health of those living there.



How does our paint absorb CO2?

Lime-based Graphenstone coatings absorb CO2 thanks to their natural carbonation process while curing. This results in cleaner environments and improved air quality. Most of the CO2 absorption occurs during the first 28 days of curing once the coating has been applied to the surface.

Carbonatation is a chemical reaction in which calcium hydroxide reacts with carbon dioxide and forms insoluble calcium carbonate.

The process of forming a carbonate is sometimes referred to as "carbonation", although this term usually refers to the process of dissolving carbon dioxide in water.



Obtain the same effect as trees in your home.

More information about the campaign at:

www.myhomeisatree.com

*The CO2 absorption occurs during the first 28-30 days after applying the product.





INTERIOR PAINTS

Ecosphere

AmbientPro+

GCS Interior

GrafClean

GrafClean Midshine

GrafClean Eggshell

NaturColor One Coat

NaturColor Exterior/Interior

Ecosphere

LIME-BASED



1L | 4L | 12.5L | 15L

Ecosphere is a mineral ecological paint specially suitable for interior walls with matt finish. Thanks to its formula based on 100% artisanal lime, the product absorbs CO2* and has an excellent breathability that prevents condensation. Made with Graphenstone Technology for greater resistance and durability. Ecosphere is ideal for construction, restoration and repainting.

BREATHABLE
REDUCES
CONDENSATION

ABSORBS CO2*
PURIFIES THE
ENVIRONMENT

**ASTHMA
FRIENDLY**

PERFORMANCE (White)	5-7 m²/L (2 coats)
PERFORMANCE (Colour)	7-9 m²/L (2 coats)
DRYING (between coats)	2-4 hours
TOTAL DRYING	24 hours
APPLICATION TOOLS	Brush, roller or airless
CLEANING TOOLS	Water
COVERING POWER	Excellent
WASHABILITY	Good
FINISH	Matt
COLOURS	White / Soft Selection



AmbientPro+

PHOTOCATALYTIC
LIME-BASED



1L | 4L | 15L

Ambient Pro+ is a photocatalytic mineral paint with a decontaminating effect with the incidence of light, whether natural or artificial, helping reduce ambient odours. It is suitable for both interior and exterior. Thanks to its formula based on 100% artisanal lime, the product absorbs CO2* and has excellent breathability, preventing condensation. With Graphenstone technology, providing resistance and durability.

**PHOTOCATALYTIC
EFFECT**

ABSORBS CO2*
PURIFIES THE
ENVIRONMENT

**ELIMINATES
ODOURS**

PERFORMANCE (White)	7-9 m²/L (2 coats)
PERFORMANCE (Colour)	7-9 m²/L (2 coats)
DRYING (between coats)	2-4 hours
TOTAL DRYING	24 hours
APPLICATION TOOLS	Brush, roller or airless
CLEANING TOOLS	Water
COVERING POWER	Excellent
WASHABILITY	Good
FINISH	Matt
COLOURS	White / Soft Selection



GCS Interior

WATER-BASED



1L | 4L | 12.5L | 15L

GCS Interior is a water based paint suitable for interior walls with a silky matt finish. Available in a wide range of pastel and intense long lasting colours which do not lose their intensity over time.

(PS) Pastel Base for pastel or light colours.
(MD) Medium Base for medium colours.
(TR) Transparent Base for dark or deep colours.

BREATHABLE
REDUCES
CONDENSATION

**HIGH COVERING
POWER**

**LONG-LASTING
COLOUR**

PERFORMANCE (2 coats)	6-9 m²/L (PS, MD) 7-10 m²/L (TR)
DRYING (between coats)	2-4 hours
TOTAL DRYING	24 hours
APPLICATION TOOLS	Brush, roller or airless
CLEANING TOOLS	Water
COVERING POWER	Excellent
WASHABILITY	Good
FINISH	Matt
COLOURS	GCS 980



*The CO2 absorption properties occurs during the first 28-30 days after applying the product.

GrafClean

WATER-BASED



1L | 4L | 12.5L | 15L

GrafClean is a water based paint suitable for interior and exterior walls with a matt finish. The product is highly breathable and provides an excellent indoor air quality due to its low VOCs content. It contains lime which acts as a natural preservative.

(PS) Pastel Base for pastel or light colours.
(MD) Medium Base for medium colours.
(TR) Transparent Base for dark or deep colours.

INDOOR
AIR QUALITY

ULTRA LOW VOCs
EMISSIONS
CLASS A+

MATT FINISH

PERFORMANCE (White)	5-7 m²/L (2 coats)
PERFORMANCE (Bases)	6-8 m²/L (2 coats)
DRYING (between coats)	2-4 hours
TOTAL DRYING	24 hours
APPLICATION TOOLS	Brush, roller or airless
CLEANING TOOLS	Water
COVERING POWER	Very good
WASHABILITY	Excellent
FINISH	Matt
COLOURS	White / GCS 980 / ColorNature 120



GrafClean

Eggshell

WATER-BASED



1L | 4L | 12.5L | 15L

GrafClean Eggshell is a water based paint suitable for interior and exterior walls with a low sheen finish. The product provides excellent indoor air quality due to its low VOCs content as well as being highly breathable. It contains lime which acts as a natural preservative.

(PS) Pastel Base for pastel or light colours.
(MD) Medium Base for medium colours.
(TR) Transparent Base for dark or deep colours.

INDOOR
AIR QUALITY

ULTRA LOW VOCs
EMISSIONS
CLASS A+

LOW SHEEN
FINISH

PERFORMANCE (White)	6-8 m²/L (2 coats)
PERFORMANCE (Bases)	6-8 m²/L (2 coats)
DRYING (between coats)	2-4 hours
TOTAL DRYING	24 hours
APPLICATION TOOLS	Brush, roller or airless
CLEANING TOOLS	Water
COVERING POWER	Very good
WASHABILITY	Excellent
FINISH	Low sheen
COLOURS	White / GCS 980 / ColorNature 120



GrafClean

Midshine

WATER-BASED



1L | 4L | 12.5L | 15L

GrafClean Midshine is a water based paint suitable for interior and exterior walls with a semi-gloss finish. Formulated to be highly wipeable and resistant, making it the perfect choice for busy areas. It contains lime which acts as a natural preservative.

(PS) Pastel Base for pastel or light colours.
(MD) Medium Base for medium colours.
(TR) Transparent Base for dark or deep colours.

LOW VOCs
EMISSIONS

OUTSTANDING
RESISTANCE AND
WASHABILITY

SEMI-GLOSS
FINISH

PERFORMANCE (White)	6-9 m²/L (2 coats)
PERFORMANCE (Bases)	6-9 m²/L (2 coats)
DRYING (between coats)	2-4 hours
TOTAL DRYING	24 hours
APPLICATION TOOLS	Brush, roller or airless
CLEANING TOOLS	Water
COVERING POWER	Very good
WASHABILITY	Excellent
FINISH	Semi-gloss
COLOURS	White / GCS 980 / ColorNature 120



GREAT VARIETY OF COLOURS

MATT | SEMI-MATT | SEMI-GLOSS
GCS 980 / ColorNature 120



NaturColor

ONE COAT

WATER-BASED



4L | 12.5L

NaturColor One-Coat is a matt finish paint distinguished by its pure whiteness and high covering power with a single coat application. NaturColor One-Coat is an ideal way for repainting interior walls and ceilings. It contains lime which acts as a natural preservative.



SMOOTH MATT
FINISH



HIGH COVERING
POWER IN ONE-COAT



NO FLECK OR
SPLASH

PERFORMANCE	8-12 m²/L (1 coat)
DRYING (between coats)	2-4 hours
TOTAL DRYING	24 hours
APPLICATION TOOLS	Brush, roller or airless
CLEANING TOOLS	Water
COVERING POWER	Very good
WASHABILITY	Good
FINISH	Matt
COLOURS	White



NaturColor

EXTERIOR/INTERIOR

WATER-BASED



4L | 15L

NaturColor Exterior/Interior is a water-based paint suitable for exterior and interiors walls with matt finish. Washable, good covering power and low in VOCs emissions. The product contains lime which acts as a natural preservative.



SUITABLE FOR
EXTERIOR/INTERIOR



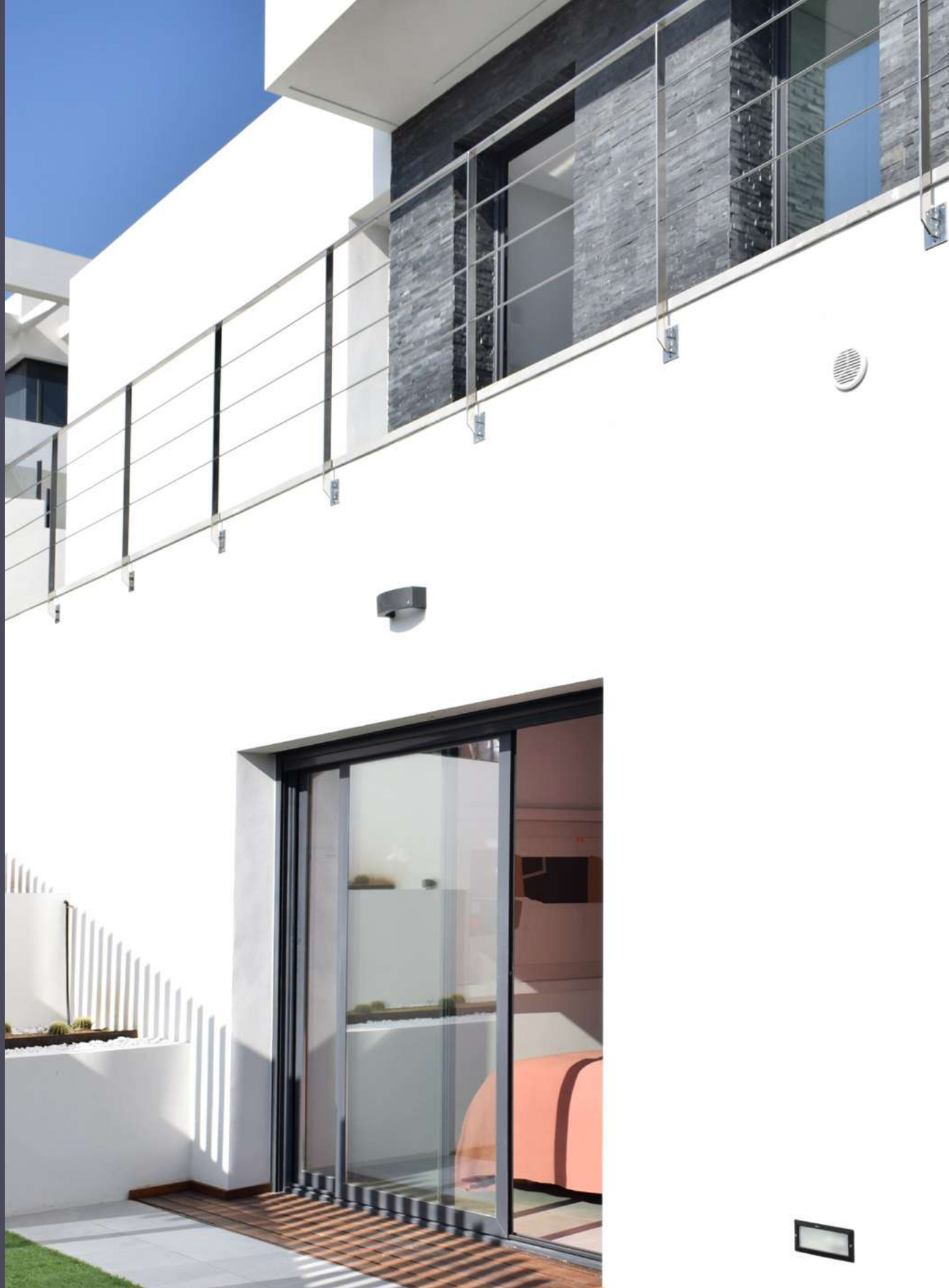
HIGH COVERING
POWER



WASHABLE

PERFORMANCE	6-8 m²/L (2 coats)
DRYING (between coats)	2-4 hours
TOTAL DRYING	24 hours
APPLICATION TOOLS	Brush, roller or airless
CLEANING TOOLS	Water
COVERING POWER	Very good
WASHABILITY	Good
FINISH	Matt
COLOURS	White





EXTERIOR PAINTS

Biosphere

GrafClean Front

GCS Exterior

NaturColor Facades

Biosphere

LIME-BASED



1L | 4L | 12.5L | 15L

Biosphere is a mineral ecological paint specially suitable for exterior walls with matt finish. Thanks to its formula based on 100% artisanal lime, the product absorbs CO2* and it has an excellent breathability that prevents condensation. Made with Graphenstone Technology for greater resistance and durability. Biosphere is ideal for construction, restoration and repainting.



BREATHABLE



ABSORBS CO2*
PURIFIES THE ENVIRONMENT



HIGH SOLAR REFLECTANCE (SRI)

GrafClean FRONT

ACRYLIC



1L | 4L | 12.5L | 15L

GrafClean Front is a highly resistant acrylic paint for facades with matte finish. The product contains lime which acts as a natural preservative. Exceptional protection against UV rays and harsh weather conditions.

(PS) Pastel Base for pastel or light colours.
(MD) Medium Base for medium colours.
(TR) Transparent Base for dark or deep colours.



FLEXIBLE
NO CRACKING



GREAT VARIETY
OF COLOURS



WEATHERPROOF
UV RESISTANT

PERFORMANCE (White)	7-10 m²/L (2 coats)
PERFORMANCE (Bases)	7-10 m²/L (PS, MD) 5-8 m²/L (TR) (2 coats)
DRYING (between coats)	2-4 hours
TOTAL DRYING	24 hours
APPLICATION TOOLS	Brush, roller or airless
CLEANING TOOLS	Water
COVERING POWER	Very good
WASHABILITY	Excellent
FINISH	Matt
COLOURS	White / ColorNature 120

GCS Exterior

SILICATE PAINT



1L | 4L | 12.5L | 15L

GCS Exterior is a mineral silicate based paint with matt finish available in a wide range of colours, suitable for exterior surfaces and facades. This product is highly breathable and resistant. Specially indicated for application in construction, restoration and repainting.

(PS) Pastel Base for pastel or light colours.
(MD) Medium Base for medium colours.
(TR) Transparent Base for dark or deep colours.



BREATHABLE



IDEAL FOR
RESTORATION
PROJECTS



LONG-LASTING
COLOUR

PERFORMANCE (Bases)	5-8 m²/L (PS, MD, TR) (2 coats)
DRYING (between coats)	2-4 hours
TOTAL DRYING	24 hours
APPLICATION TOOLS	Brush, roller or airless
CLEANING TOOLS	Water
COVERING POWER	Excellent
WASHABILITY	Good
FINISH	Matt
COLOURS	White / ColorNature 120

NaturColor

ACRYLIC



4L | 15L

NaturColor Facades is an acrylic paint with matt finish, recommended for facades. Weather resistant, washable and with good covering power.



LOW VOCS
EMISSIONS



GOOD COVERING
POWER



WEATHERPROOF

PERFORMANCE	6-8 m²/L (2 coats)
DRYING (between coats)	2-4 hours
TOTAL DRYING	24 hours
APPLICATION TOOLS	Brush, roller or airless
CLEANING TOOLS	Water
COVERING POWER	Very good
WASHABILITY	Good
FINISH	Matt
COLOURS	White



*The CO2 absorption occurs during the first 28-30 days after applying the product.





FUNCTIONAL PAINTS

Shielding

Proshield

Waterproofing

WaterProof Therm

Proshield

SHIELDING PAINT



4L | 15L

Proshield is a conductive paint designed to protect against high and low frequency electromagnetic radiation.



Proshield reduces electromagnetic pollution, as well as interferences between wireless networks in different spaces. Recommended for commercial stores and warehouses, hospitals, domestic use, offices, laboratories, recording studios and server rooms.

APPLICATION
GUIDELINES VIDEO



SCAN THIS QR



PROTECTION
AGAINST RADIATION



ATTENUATION
32 dB at 900 MHz
(IEEE 299:2006).



FREE OF METALLIC
COMPONENTS

Ideal for protection against electromagnetic radiation from telephone towers (including 5G technology), radio antennas, television transmitters, external WiFi networks and other EMR/EMF emitting devices.



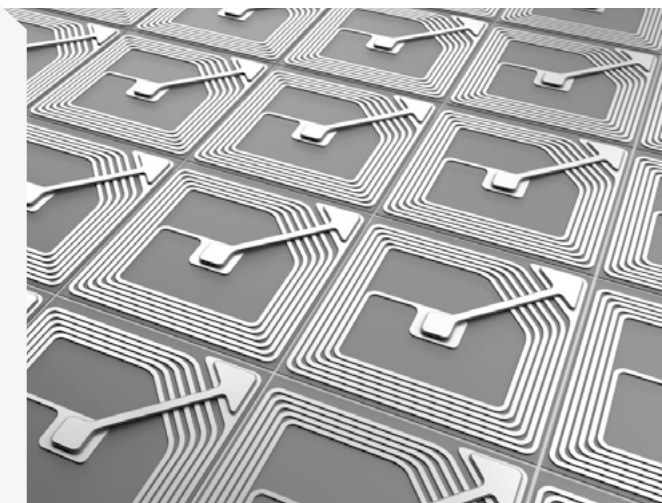
PERFORMANCE	5-7 m ² /L (2 coats)
DRYING (between coats)	4-6 hours
TOTAL DRYING	24 hours
APPLICATION TOOLS	Short-nap roller, brush or airless
CLEANING TOOLS	Water
PRODUCT APPEARANCE	Black
PROTECTION AGAINST	High frequency radiation & low frequency electric field
SHIELDING EFFICIENCY	32 dB of attenuation at 900 MHz (IEEE 299:2006)



EMPOWERING RFID

Proshield is specially recommended to improve the efficiency of the RFID systems, allowing:

- Combining different RFID & Internet technologies
- Faster and more accurate readings
- Improving communication by bouncing the signal
- Reducing theft noise and signal losing
- Better control of labels and merchandise
- Avoiding the RF signal escapes
- Acting as RF shielding



Retail



Logistics
Warehouse



Hospitals



Automotive
sector



RFID SOLUTION THE PERFECT COMBINATION

1° PRIMER

MULTISURFACE PRIMER
(Pag. 31)



2° SHIELDING PAINT

*Proshield is not a finishing product, it must be protected



3° FINISH PAINT

WATER-BASED
(Pag. 16)



WaterProof THERM

WATERPROOF COATING
FOR ROOFS



4L | 15L

WaterProofTHERM is a water-based protective coating with glass microspheres ideal for roof coatings. It is the perfect solution to protect terraces and roofs from leaks and/or accumulations of water. It works by penetrating into small fissures forming a continuous impermeable and elastic layer. It is a solution that contributes to improving energy efficiency thanks to its high solar reflectance index.




WATERPROOF
ANTI-LEAKING FOR
ROOFING

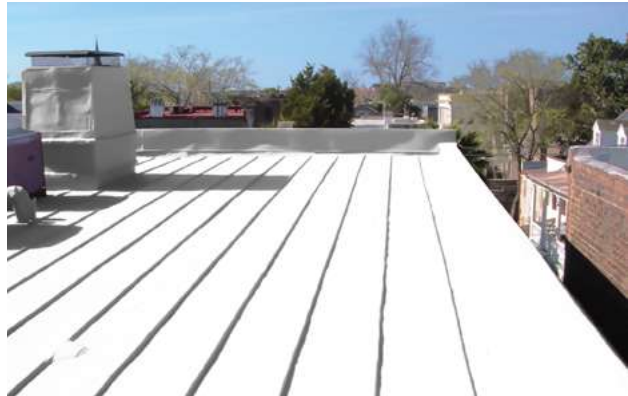


**HIGH SOLAR
REFLECTANCE
(SRI)**



WEATHERPROOF
UV RESISTANT

PERFORMANCE	700-800 g/m ²
TOTAL DRYING	24 hours
APPLICATION TOOLS	Brush, roller
CLEANING TOOLS	Water
FINISH	Matt
APPLICATION SURFACES	Roofs
COLOURS	 WHITE



COMPLEMENTARY PRODUCTS

Primers

AmbientPrimer
Filler
Four2Four
PrimerPlus

Protective finishes

Hydrox Seal
BeeWax

Treatments

Miner Seal
Neutralysal
StopWater

Bonding and priming for mortars

Naturglue
Contak

AmbientPrimer

PRIMER



1L | 4L | 12.5L | 15L

AmbientPrimer is a primer that regulates and reduces the absorption of the substrate, reducing the amount of paint needed. Ideal for very absorbent substrates such as cellars, rooms without ventilation and prone to the growth of microorganisms.

BREATHABLE
REDUCES
CONDENSATION

EVEN'S THE
ABSORPTION OF
THE SUBSTRATE

ANTI-ALGAE

PERFORMANCE	25-35 m²/L (1 coat)
TOTAL DRYING	24 hours
APPLICATION TOOLS	Brush, roller or airless
CLEANING TOOLS	Water
PRODUCT APPEARANCE	Liquid / Colourless
APPLICATION SURFACES	All types of surfaces common in construction, except gypsum or perlite plaster.

Filler

MINERAL PRIMER



1L | 4L | 12.5L | 15L

Filler is a mineral silicate based primer which regulates the texture of the substrate, covers micro-cracks (<1 mm) and homogenises repaired surfaces or old paint scrapes.

BREATHABLE
REDUCES
CONDENSATION

SURFACE TEXTURE
REGULATOR

IMPROVES PAINT
PERFORMANCE

PERFORMANCE	5-7 m²/L (1 coat)
DRYING (TO PAINT)	4-6 hours
APPLICATION TOOLS	Brush, roller or airless
CLEANING TOOLS	Water
PRODUCT APPEARANCE	Dense liquid
APPLICATION SURFACES	Deteriorated paints, surfaces with microcracks and/or irregular textures.

Four2Four

MULTISURFACE PRIMER



1L | 4L

Four2Four is a multi-surface primer with water-based formula. It ensures paint adhesion to tough or non-porous surfaces such as metal, glass, MDF panels and more. Sealer with tannin-blocking power for wood and with anti-rust effect for metals.

MULTISURFACE
FOR ALL TYPE OF
SURFACES

ANTIOXIDANT
ON METAL SURFACES

SEALER
ON WOOD &
MDF BOARDS

PERFORMANCE	11-14 m²/L (1 coat)
DRYING (BETWEEN COATS)	30-60 min.
DRYING (TO PAINT)	6-8 Hours
APPLICATION TOOLS	Brush, roller or airless
CLEANING TOOLS	Water
PRODUCT APPEARANCE	White liquid
APPLICATION SURFACES	Ceramics, polyurethane or epoxy paints, plasticized panels, etc. Also on metal or wood.

PrimerPlus

LIME-BASE PRIMER



4L | 15L

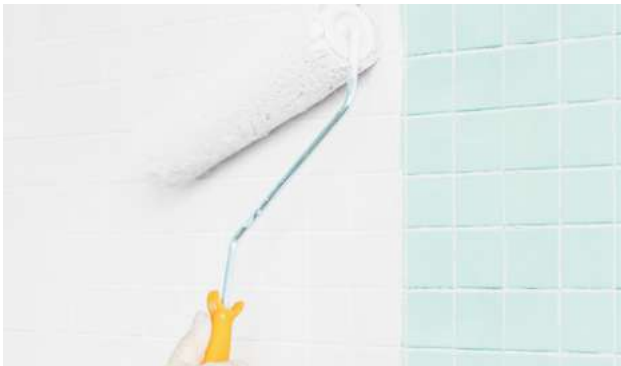
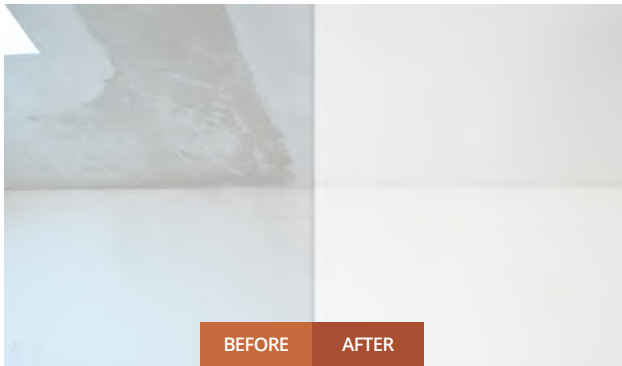
Primer Plus is a lime-based primer with a matt white finish. Its high PH content acts as a surface disinfectant at the time of application. The product contains lime which acts as a natural preservative. Made with Graphenstone technology, providing resistance, durability and prevention of condensation. It is ideal as a natural base for interior and exterior paints.

BREATHABLE
REDUCES
CONDENSATION

ABSORBS CO₂*
PURIFIES THE
ENVIRONMENT

MADE WITH
GRAPHENSTONE
TECHNOLOGY

PERFORMANCE	14-20 m²/L (1 coat)
DRYING (BETWEEN COATS)	2-4 hours
DRYING (TO PAINT)	24 hours
APPLICATION TOOLS	Brush, roller or airless
CLEANING TOOLS	Water
PRODUCT APPEARANCE	White
APPLICATION SURFACES	All types of surfaces common in construction, excepting gypsum or perlite plaster.



*The CO2 absorption properties occurs during the first 28-30 days after applying the product.

Minerseal

MINERAL CONSOLIDATING TREATMENT



1L | 5L | 15L

Minerseal is a mineral based sealer. It protects mineral finishes, consolidates substrates with poor adhesion (sandy, dusty, etc.) and reduces absorption of highly absorbent substrates. This product does not alter the permeability of the substrate to gases or water vapor.



BREATHABLE
REDUCES
CONDENSATION



MINERAL SEALER
CONSOLIDATES
SUBSTRATE



SEALER
FOR SURFACE
DEFECTS

PERFORMANCE	13-16 m²/L (1 coat)
TOTAL DRYING	24 hours
APPLICATION TOOLS	Brush, roller or airless
CLEANING TOOLS	Water
PRODUCT APPEARANCE	Whitish liquid / Colourless
APPLICATION SURFACES	Exposed or prefabricated concrete elements, calcareous sandstone, etc.

Neutralysal

ANTI-SALTPETER TREATMENT



1L | 5L

Neutralysal is a colourless treatment to clean up walls damaged by saltpeter. It prevents the appearance of white stains caused by the absorption of water by capillarity and the dragging of salts from the wall. Suitable for interior and exterior use.



ANTI-SALTPETER
TREATMENT



PREVENTS
WHITE STAINS



SUITABLE FOR
INTERIOR/EXTERIOR

PERFORMANCE	7-8 m²/L (1 coat)
TOTAL DRYING	24 hours
APPLICATION TOOLS	Brush, roller or airless
CLEANING TOOLS	Water
PRODUCT APPEARANCE	Colourless
APPLICATION SURFACES	Apply to surfaces that show salt entrapment due to water absorption by capillarity.

StopWater

ANTI-HUMIDITY TREATMENT



1L | 5L

StopWater is a temporary treatment which allows the application of paint on surfaces with humidity. It is applied prior to painting ; it also acts as a consolidator of mineral substrates. The product degrades as a result of the high pH of Graphenstone coatings.



FOR HUMIDITY
SURFACES

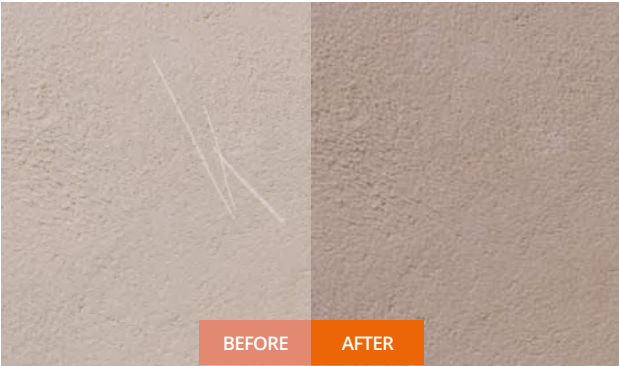


MINERAL SEALER
CONSOLIDATES
SUBSTRATE

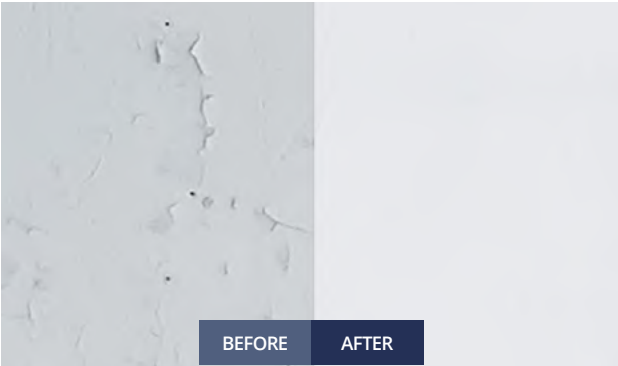


INCREASES
SOLUTION
DURABILITY

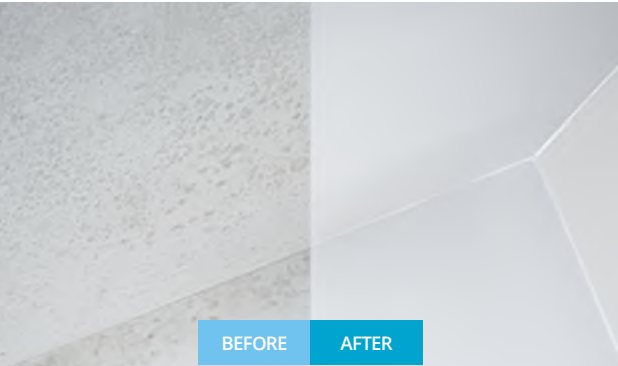
PERFORMANCE	28-32 m²/L (1 coat)
TOTAL DRYING	6-12 hours
APPLICATION TOOLS	Brush, roller or airless
CLEANING TOOLS	Water
PRODUCT APPEARANCE	Transparent liquid
APPLICATION SURFACES	Surfaces with high humidity.



BEFORE AFTER



BEFORE AFTER



BEFORE AFTER



BeeWax

PROTECTIVE WAX



1L | 4L

BeeWax is a natural wax for the protection of plasters and mortars. It protects colours and prevents the absorption of water and its pollutants without altering the permeability of the substrate to gases or water vapor.



PREVENTS THE
ABSORPTION
OF WATER



PREVENTS
DEPIGMENTATION
OF INTENSE COLOURS



PROTECTION OF
LIME PLASTER &
MORTARS

PERFORMANCE	30-40 m²/L (1 coat)
DRYING (between coats)	24 hours
APPLICATION TOOLS	Sponge, trowel or short-haired glove. Wool mop (polished).
CLEANING TOOLS	Water
PRODUCT APPEARANCE	Cream / Colourless
APPLICATION SURFACES	Lime plaster & mortar



Hydroxeal

HYDROPHOBIC PROTECTOR



1L | 5L

Hydroxeal is a water-repellent treatment with a transparent matte finish ideal for protecting surfaces affected by humidity and/or pollution. It acts as a water repellent without significantly altering the permeability of the substrate to gases or water vapor.



ANTI-HUMIDITY
TREATMENT

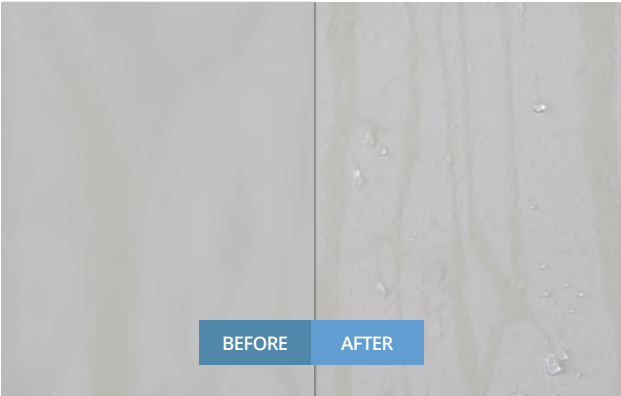


PROTECTS FROM
POLLUTION



PENETRATES INTO
THE SUBSTRATE

PERFORMANCE (on mineral paints)	100-200 ml/m²
PERFORMANCE (on mineral mortars)	300-400 ml/m²
TOTAL DRYING	24 hours
APPLICATION TOOLS	Brush, roller or airless
CLEANING TOOLS	Water
PRODUCT APPEARANCE	Whitish liquid / Colourless



BEFORE

AFTER



Naturglue

FLEXIBLE BONDING MORTAR



Kalgraphin is a liquid lime putty with graphene for mortars preparation.

13 Kg + 4.5 Kg (Bi-component)

Naturglue is a two-component air lime paste adhesive mortar with Graphenstone technology. Highly breathable and flexible. It is recommended as a previous coat to ensure the adherence of finishing mortars; to adhere ceramic tiles and as an anchor for insulation boards (SATE); it can also be used as a repair mortar for the rehabilitation and restoration of historic buildings.



BREATHABLE
REDUCES
CONDENSATION



FLEXIBLE
NO CRACKING



**LOW SURFACE
CAPILLARITY**

PERFORMANCE (5 mm)	5 Kg/m²
DRYING (between coats)	24-48 hours
DRYING (finishing)	24 hours
APPLICATION TOOLS	Trowel, notched trowel, brush
CLEANING TOOLS	Water
PRODUCT APPEARANCE	Sand colour
APPLICATION SURFACES	All types of common surfaces in construction: mortar, brick, concrete, prefabricated plates, etc.



Contak

MULTISURFACE PRIMER FOR MORTARS



1L | 4L | 12.5L | 15L

Contak is a multi-surface primer for fine mortars and plasters, provides mechanical anchoring for decorative mortars and plasters, ensuring adhesion to smooth surfaces such as stained glass, ceramics, metals, wood and ironed concrete among others.



**PROVIDES
MECHANICAL
ANCHORING**



**ENSURES ADHESION
TO SMOOTH
SURFACES**



**QUICK AND EASY
APPLICATION**

PERFORMANCE	9-12 m²/L (1 coat)
TOTAL DRYING	24 hours
APPLICATION TOOLS	Brush or roller
CLEANING TOOLS	Water
PRODUCT APPEARANCE	Red dense liquid
APPLICATION SURFACES	Smooth surfaces such as glass, ceramic, metals, wood, concrete smooth, etc.



THE EARTH COLLECTION

Siena

Venetta

Modena

Firenzza

Colours

Textures

Health & Sustainability

Naturalness is accompanied by the care of health. We produce materials that help you live better creating healthier environments.

The Earth Collection is a range of ecological products free of harmful substances. Our focus is to reach the well-being of people and create a positive impact on our planet.



Nature

A healthy home is a beautiful home. Connecting to nature is a way of self-care. In Graphenstone we rely on the purity of the natural mineral ingredients that we use. The coatings are designed with the expertise of our product developers, making our coating formulations even more effective.

Timelessness

We care about creating products that last over time, for its quality and beyond ephemeral trends.

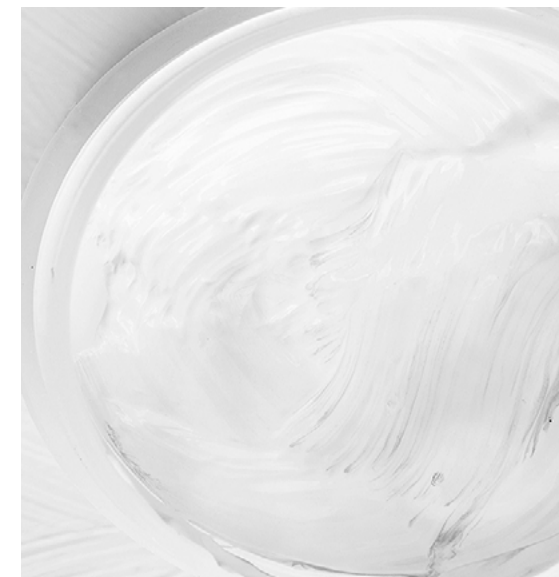


Beauty

The beauty of lime is reflected in the nuances that appear during its application; the marks of the spatulas, the trowels, the irregularities that are recognizable by sight and touch, producing a sensory experience.

Technology

The innovation with Graphenstone technology has been the fundamental axis of the birth of Graphenstone materials. Our laboratory continue intensively with the research of more sustainable ingredients to develop new effective formulations.



Craftmanship

Graphenstone products were created searching for the artisanal origin and the good work of past generations. The lime used is selected by hand and cooked in a wood oven in a millennial process.

Wabi-sabi

Wabi-sabi is a Japanese term that describes a aesthetic vision based on "the beauty of imperfection". It combines the attention to the composition of minimalism, with the warmth of objects from nature.



Siena

MINERAL LIMEWASH PAINT



15L | 4L | 0.75L

Siena is a mineral paint ideal for creating a limewash effect on interior surfaces. Intended for high decoration that seeks the timeless beauty of lime effects, slightly marking the waters and chiaroscuros with a natural matte finish, easy to apply. Thanks to it´s formula, the product absorbs CO2* and has an excelent breathability that prevents condensation. With Graphenstone Technology for greater resistance and durability.



Breathable
Reduces condensation



Absorbs CO2*
Purifies the environment



Limewash Finish

*The CO2 absorption occurs during the first 28-30 days after applying the product.

PERFORMANCE	6-8 m²/L (2 coat)
DRYING (between coats)	2-4 hours
TOTAL DRYING	24 hours
APPLICATION TOOLS	Mitt, glove, sponge or masonry brush.
CLEANING TOOLS	Water
FINISH	Limewash effect
COLOURS	The Colours of the Earth

Pigmentation

Siena 15L	x4 u. 250ml	Liquid Toner*
Siena 4L	x1 u. 250 ml	Liquid Toner*
Siena 0.75L	x1 u. 50 ml	Liquid Toner*

*This product is sold separately



Venetta

NATURAL VENETIAN PLASTER



Kit 15L (bi-component) | Kit 4L (bi-component)

Venetta is a natural venetian plaster with a decorative marbled finish. It offers a great versatility of high decoration projects in interiors and exteriors, creating healthier decorative environments. Venetta contributes to create healthy spaces, absorbs CO2* and is highly breathable. The product is made with Graphenstone technology, providing resistance and durability.



Breathable
Reduces condensation



Absorbs CO2*
Purifies the environment



Venetian plaster Finish

*The CO2 absorption occurs during the first 28-30 days after applying the product.

PERFORMANCE	4-5 m²/L (2 coat)
DRYING (between coats)	30 min.
DRYING (to polish by hand)	30-40 min.
DRYING (electric polisher)	60-90 min.
TOTAL DRYING (final protection)	24 hours
APPLICATION TOOLS	Plaster trowel. For matte finish: fine sandpaper. For gloss finish: Japanese trowel or electric polisher.
CLEANING TOOLS	Water
COLOURS	The Colours of the Earth

Pigmentation

Venetta Kit 15L	x4 u. 250ml	Liquid Toner*
Venetta Kit 4L	x1 u. 250ml	Liquid Toner*

*This product is sold separately



Modena

LIME MORTAR - SUPERFINE FINISH



15.75Kg (bi-component) | 4Kg (bi-component)

Modena is a bi-component lime mortar in paste with Graphenstone technology. Continuous coating with a superfine finish, natural matt and with lime effects for vertical and horizontal surfaces. Highly breathable. For application in construction, restoration of historic buildings and high decoration.



Breathable
Reduces condensation



Absorbs CO2*
Purifies the environment



SuperFine natural Finish

*The CO2 absorption occurs during the first 28-30 days after applying the product.

PERFORMANCE	5 Kg/m² (2-3 mm)
DRYING (between coats)	24-48 hours
DRYING (final protection)	4 days
DRYING (pedestrian traffic)	7 days
APPLICATION TOOLS	Preparation: mechanical mixer, bucket Application: trowel Finishing: trowel, finishing trowel.
CLEANING TOOLS	Water
COLOURS	The Colours of the Earth

Pigmentation

Modena 15.75 Kg	x4 u. 250ml	Solid Pigment*
Modena 4Kg	x1 u. 250ml	Solid Pigment*

*This product is sold separately

Firenzza

LIME MORTAR - TEXTURED FINISH



17Kg (bi-component) | 4Kg (bi-component)

Firenzza is a bi-component lime mortar of with Graphenstone technology. Thanks to its technical properties, it can be processed as a continuous material allowing the same finish to be obtained on both vertical and horizontal surfaces. It creates an entirely mineral and highly breathable support. Suitable for construction, rehabilitation and restoration of historical buildings.



Breathable
Reduces condensation



Absorbs CO2*
Purifies the environment



Textured natural Finish

*The CO2 absorption occurs during the first 28-30 days after applying the product.

PERFORMANCE	5 Kg/m² (5 mm)
DRYING (between coats)	24-48 hours
TOTAL DRYING	4 days
APPLICATION TOOLS	Preparation: mechanical mixer, bucket Application: trowel Finishing: according to the texture.
CLEANING TOOLS	Water
TEXTURE CREATION	The Textures of the Earth
COLOURS	The Colours of the Earth

Pigmentation

Firenzza 17Kg	x4 u. 250ml	Solid Pigment*
Firenzza 4Kg	x1 u. 250ml	Solid Pigment*

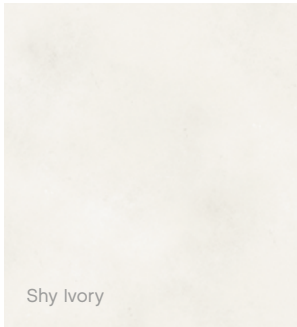
*This product is sold separately

The Colours of the Earth

Pigments & toners for paints and mortars
Products: Siena, Venetta, Modena and Firenzza



Liquid Toner formats: 250ml & 50ml (use with Siena & Venetta)
Solid Pigment format: 250ml (use with Modena & Firenzza)



Shy Ivory



Warm Sand



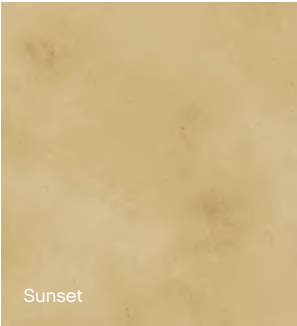
Dusky Sand



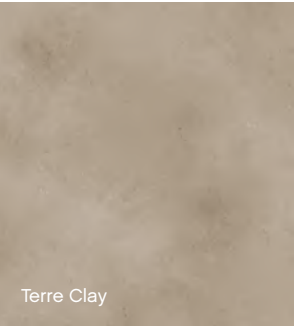
Linen



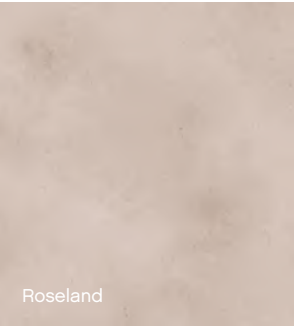
Strawy



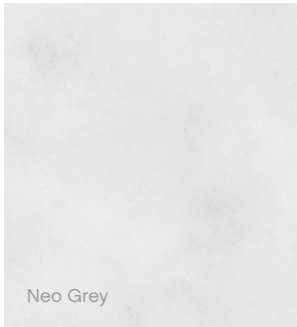
Sunset



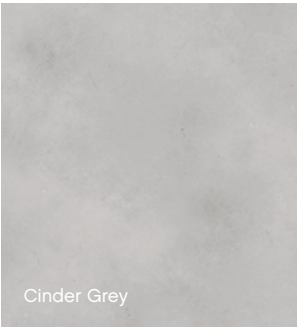
Terre Clay



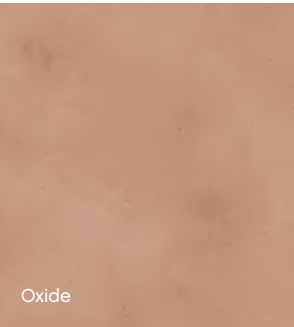
Roseland



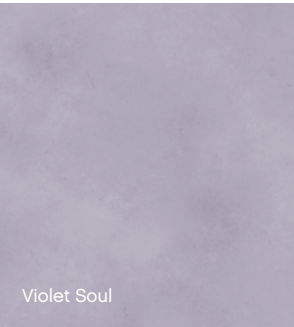
Neo Grey



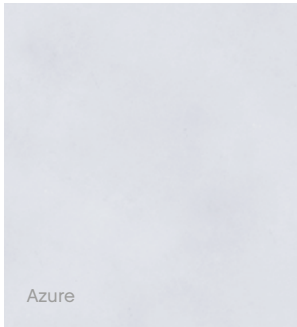
Cinder Grey



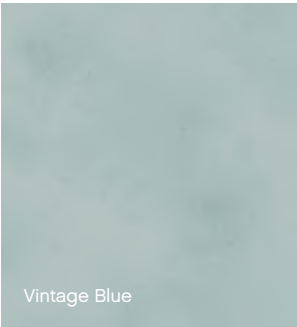
Oxide



Violet Soul



Azure



Vintage Blue



Organic Green



Brandy Garnet

The Textures of the Earth

Finishes for textured mortars
Product: Firenzza

Textures tutorial

Discover how to
create your texture.

SCAN THIS QR



Relief



Aqua



Structural



Fine Brushed



Mantra



Natural



Root



Pure Pressed

Quality

Graphenstone equates to quality & certifications

At Graphenstone we are committed to the environment which is why we produce natural materials. Among our values are ecology, nature, sustainability and respect for the environment. Our products meet the principles of a circular economy. It is in our DNA to be an innovator and creator of ecological and respectful products for the people and the environment.

Our philosophy: acting as a benchmark for other companies, complying with the requirements of green building through economic activity. Because, for us, innovation and sustainability go hand in hand.



		Graphenstone Technology	Cradle to Cradle Program	Indoor Air Comfort GOLD	Environmental Product Declaration	CO ₂ (Huella de Carbono)	Ecolabel	Material Health GOLD	A+ France	CE	AgBB Scheme Germany	Toy Safety	Global Green Tag GREEN BUILDING HEALTHIER PLATINUM	Sensitive Choice Asthma Friendly
INTERIOR PAINTS														
Ecosphere	White	✓	GOLD		✓	✓	✓	✓				✓	✓	✓
	Colour	✓	SILVER		✓								✓	
AmbientPro+	White	✓	GOLD		✓	✓		✓					✓	✓
	Colour	✓	SILVER		✓								✓	
GCS Interior		✓	SILVER		✓								✓	
GrafClean	White	✓	BRONZE	✓	✓				✓	✓	✓	✓		
	Colour	✓	BRONZE	✓	✓				✓					
GrafClean Midshine	White	✓			✓									
	Colour	✓			✓									
GrafClean Eggshell	White	✓		✓	✓				✓		✓			
	Colour	✓		✓	✓				✓		✓			
NaturColor Ext/Int							✓							
EXTERIOR PAINTS														
Biosphere	White	✓	GOLD		✓	✓	✓	✓		✓			✓	✓
	Colour	✓	SILVER		✓								✓	
GrafClean FRONT	White				✓									
	Colour				✓									
GCS Exterior		✓	SILVER		✓								✓	
COMPLEMENTARY PRODUCTS														
Filler			GOLD		✓								✓	
PrimerPlus		✓												
Naturglue		✓												
THE EARTH COLLECTION														
Siena		✓	SILVER											
Venetta		✓	SILVER											
Modena		✓	GOLD											
Firenzza		✓	GOLD											



SHOWROOM

The Gallery

INFORMATION & BOOKINGS
info@graphenstone.com

The essence of Graphenstone materialised in a showroom. A journey through tradition and innovation that is completed within a commercial space, where sustainable materials, textures and finishes are the protagonists.

A multisensory experience that appeals to the client's senses, who can appreciate, touch and feel the quality and properties that the brand offers.



WHERE TO FIND US?

Graphenstone Headquarters

Polg Ind Poliviso.C/ Carpinteros, 25.
41520. El Viso del Alcor, Seville. Spain
info@graphenstone.com
(+34) 955 52 94 35

Global Delegations

Europe

- Ireland
- UK
- Netherlands
- Norway
- Germany

Middle East

- Georgia
- Kazakhstan

Asia & Oceania

- Thailand
- Vietnam
- Malaysia
- Macao
- Hong Kong
- Japan
- Australia

North America

- Canada
- US

Latin America

- Panama
- Colombia





GRAPHENSTONE

Graphenstone | IEDISA
Polg Ind Poliviso.C/ Carpinteros, 25.
41520. El Viso del Alcor, Seville. Spain
(+34) 955 52 94 35
www.graphenstone.com