

FIRENZZA

Texture natural mortar
TEXTURED FINISHES



Interior
& Exterior



Breathable
Absorbs CO2



Free of VOCs
emissions



Resistant
& durable



With Graphene
Technology



With high
quality lime



Textured
finishes

Our contribution to create healthier and more sustainable homes. We design and produce thinking about the environment, circular economy and energy efficiency, that's why our products are ideal for green projects, Green Buildings or Eco-buildings, energy self-sufficient dwellings, Passive Houses, or for the creation of smart cities models , Smart Cities.



World's Best
Certified
Green Brand

www.graphenstone.com

GRAPHEN STONE

The Earth Collection

Graphenstone Headquarters | IEdiSa, S.A.
Polg Ind Poliviso. Carpinteros, 25.
41520 El Viso del Alcor, Sevilla. España (Spain).
Phone: (+34) 955 529 435
info@graphenstone.com
www.graphenstone.com

IEdiSA, SA. © Copyright 2018. Todos los derechos reservados.

GRAPHEN STONE

The Earth Collection

Firenzza

Texture natural mortar
TEXTURED FINISHES

GRAPHENSTONE

Firenzza

Texture natural mortar
TEXTURED FINISHES

GRAPHEN
STONE
The Earth Collection



Format: 18Kg y Kit 4Kg*

Bi-material (A+B*)

*Material B inside the package..

**Is served in two containers: 3Kg + 1Kg

USE	Interior & Exterior
YIELD	5 Kg/m ² (5mm)
DRYING	It depends on texture
TOTAL DRYING	4-7 Days
ACABADO	The Textures of the Earth
COLORES	The Colours of the Earth

Firenzza is a natural aerial lime mortar with graphene technology. This material is highly flexible and resistant, ideal for creating highly decorative textures. Each texture presents a specific technique according to The Textures of the Earth. Applied in building, rehabilitation and restoration of historic buildings. Creates an entirely mineral and highly breathable finish.

This product is served in bi-material format, having to mix it to obtain the final product. The pigmentation is presented in Toner of 250ml (solid pigment) offered in 16 colours "The Colours of the Earth".

The Textures



RELIEF



AQUA



STRUCTURAL



FINE BRUSHED



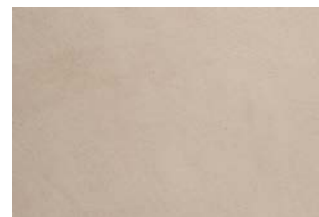
MANTRA



NATURAL



ROOT



PURE PRESSED

The Colours



SHY IVORY



WARM SAND



DUSKY SAND



LINEN



STRAWY



SUNSET



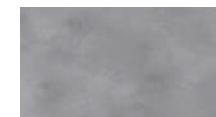
TERRE CLAY



ROSELAND



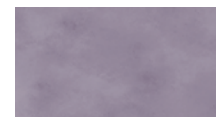
NEO GREY



CINDER GREY



OXIDE



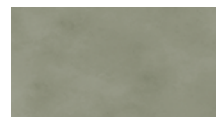
VIOLET SOUL



AZURE



VINTAGE BLUE



ORGANIC GREEN



BRANDY GARNET

Textures Tutorial:

Discover how to create the textures in:
www.graphenstone.com/texturas/ES.pdf

* The colors of this letter are approximate and may vary with respect to color original. Colors on request Check availability