

GRAPHENSTONE

THE ORIGINAL & AUTHENTIC



**IT'S TIME TO PAINT A DIFFERENT WORLD.
NOW, YOU CAN TRANSFORM YOUR HOME
IN A BETTER PLACE TO LIVE!**

2020 CATALOGUE

www.graphenstone.com

Content

Graphenstone

- 4 COMPANY
- 6 LIME BASE
- 8 GRAPHENSTONE TECHNOLOGY
- 10 PERFECT MIX
- 12 HEALTHY ENVIRONMENTS
- 14 MY HOME IS A TREE

Products & Collections

Premium

- 18 PAINTS
- 26 FINISHES
- 30 MORTARS & PUTTIES

Nature

- 34 PAINTS
- 36 TREATMENTS
- 37 MORTARS

Nevada

- 40 PAINTS

Primers & Treatments

- 44 PRIMERS
- 46 TREATMENTS

The Earth Collection

- 51 PHILOSOPHY
- 56 PAINTS & STUCCOS
- 58 MORTARS
- 60 PROTECTORS
- 62 COLOURS & TEXTURES

Woodston

- 65 FINISHES FOR WOODS

74 Quality

79 Awards

80 Showrooms

82 Global

Profile

Graphenstone. Paints and coatings for the 'green generation'.

Graphenstone is the brainchild of a chemical engineer who dedicated himself to the idea of developing a natural, ecological and health conscious coating for the 21st century. Antonio León Jiménez has succeeded in his mission and is today President and CTO (Chief Technical Officer) of Graphenstone.

Having spent years working as CTO in a successful Spanish coatings firm, Antonio began his new enterprise, IEdiSA, in 2009. This became the foundation for Graphenstone.

In his role as President of Graphenstone, Antonio has committed himself tirelessly to the development and creation of the most innovative and ground breaking line of natural paints and mortars using lime from the highest quality local sources. This unique lime is created through using a 100% natural and environmentally friendly production cycle. Thus, a tradition which had almost been forgotten has been brought back onto the market.



Our contribution to the building of healthier and sustainable homes.

The next step. After generating new ecological, natural and sustainable coatings with a lime base, Antonio León took the process a step further by using the innovative measure of adding graphene to the formula. The objective behind the utilisation of graphene was to enhance the products properties by improving resistance, flexibility and conductivity while maintaining its natural qualities.

Perseverance was key. After a year of research at the University of Seville and numerous unsuccessful attempts, the Antonio achieved his goal which was to develop a graphene polymer able to improve the material qualities with outstanding results.

The very first range of paints and coatings with graphene technology.

Graphenstone was created in November 2013. Antonio's dream came true when he created a worldwide groundbreaking eco-friendly product with exceptional qualities. Since the production of our initial range of paints and coatings, we have continued to work diligently creating ever more healthy and sustainable coatings for all manner of buildings.



WORDL'S FIRST

Lime Basis

High Quality Lime is the raw material of Graphenstone's products.

The Graphenstone products use lime made in wood burning kilns, which produces a high degree of whiteness and purity. This natural lime, has been produced in this way since the midnineteenth century.

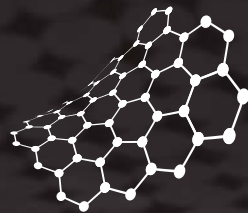
Furthermore, the lime cycle is 100% natural, from the wood used to feed the oven, through the firing, to the collection.



The artisan method to obtain the lime results in a high whiteness and purity.



Unique qualities of graphene



FLEXIBILITY

Up to 20% flexibility
without damage.

STRENGTH

200 times stronger than
structural steel.

THERMAL CONDUCTIVITY

Scientifically proven
high thermal conductivity.

ELECTRICAL CONDUCTIVITY

1000 times better conductor
of electric current density than
copper.

WORLD'S FIRST

Graphenstone Technology

Graphenstone paints combine lime and graphene technology in a unique formula that we call Graphenstone Technology. Lime, a natural and completely artisanal material, is complemented by graphene materials that improve its strength and flexibility. This perfect blend of tradition, innovation and technology enables us to create premium, environmentally friendly paints of the highest quality, with a longer life and lower maintenance, which translates into considerable savings. That's Graphenstone Technology

**“We use this technology
to achieve more efficient
materials that meet the
requirements of today's
highly demanding market
which is committed
to new and more
sustainable methods of
manufacturing.”**



AN INCOMPARABLE PAINT

Perfect Mix

Tradition, innovation & technology
are the perfect ingredients.

Lime and graphene combined form the ultimate ecological natural coatings and paints in the world. This is why Graphenstone products have excellent performance and covering properties. Thanks to their flexibility, the coatings neither crack nor flake. They also contribute to energy saving due to their great reflective power. Moreover, thanks to its mineral character it reduces the reverberance of the sound.

We design and manufacture with respect for the environment, the circular economy and energy efficiency; this is the reason why our products fit perfectly in Green Buildings or Eco-buildings, Passive Houses and Smart Cities.



Graphenstone is the most advanced
solution of ecological and natural,
paints and coatings in the market.



Healthy Environments



HIGH QUALITY
LIME BASE



SUSTAINABLE
BUILDING



SMART CITIES



HIGH QUALITY
& CERTIFICATION



GRAPHENSTONE
TECHNOLOGY



UNIQUE IN
THE WORLD



ENERGY
SAVINGS



RESISTS EXTREME
WEATHER CONDITIONS



HERITAGE
RESTORATION



HOUSING &
SCHOOLS



MINIMUM
CARBON FOOTPRINT



COSTS
SAVINGS



REDUCES SOUND
TRANSMISSION



INTERIORS



LABORATORIES &
RESEARCH CENTRES



BREATHABLE
PURIFIES THE
ENVIRONMENT



HIGH
PERFORMANCE



CREATES HEALTHY
ENVIRONMENTS



EXTERIORS



HEALTH
SECTOR



ABSORBS CO₂



RESISTANT
& DURABLE



HIGH-STANDARD
DECORATION



STORES



INDUSTRY



100% ECOLOGICAL
ECO FRIENDLY



WASHABLE



ART &
DECORATION



LARGE
SURFACES



OFFICES
& UNIVERSITIES

MY HOME IS A TREE

Transform your HOUSE into a TREE by painting with Graphenstone

Imagine transforming your home, your building or your town into a much greener place! With Graphenstone, this is now a reality. Just three 15 litre buckets of Graphenstone paint removes no less than 14.40kg of CO₂. The same amount as an adult tree weighing 250kg!

Convert your home into a tree, your building into a garden and your town into a forest. This incredible change is possible today. And Graphenstone provides the key. Let's create a more sustainable world.

More information about the campaign at:
www.myhomeisatree.com

Three 15 litre buckets removes no less than 14.40Kg of CO₂



How does our paint absorbs CO₂?

It is made possible due to the raw materials. We have taken a paint which has been used for hundreds of years, a **natural lime based** paint, and changed the molecular structure. It **absorbs CO₂ from the air** during its carbonation process; it is a highly breathable paint; it has natural antibacterial and insect repellent properties. It is a material found in nature and it can help us to transform our home into an **eco-friendly living space**.

In addition, we have improved the paint by adding **Graphene fibres** which optimise its properties and give it its durability.

Why it's important to reduce CO₂?

The high concentration of CO₂ in the world increase the **greenhouse effect** that is contributing to a rise in temperature on Earth. In addition, the air **pollution in cities** is causing serious concern for the health of those living there.

Our products can help improve the quality of the world's air.

HELP US TO
OBTAIN THE
SAME EFFECT AS
1,000,000
TREES.



Premium

PAINTS

Biosphere *Premium*

Lime natural paint for exterior

Ecosphere *Premium*

Lime natural paint for interior

AmbientPro+ *Premium*

Natural photocatalytic paint

Proshield *Premium*

Conductive shielding paint

GrafClean *Premium*

Ecological paint with Graphenstone technology

GrafClean Ext *Premium*

Ecological paint with Graphenstone technology for exteriors

GrafClean Front *Premium*

Ecological paint with Graphenstone technology for facades

GrafClean Therm *Premium*

Ecological thermal insulating paint

GrafClean Ag+ *Premium*

Ecological antimicrobial paint

GrafClean Silky *Premium*

Ecological paint with Graphenstone technology

Biosphere

Premium

Lime natural paint with
graphenstone technology
EXTERIOR

Ecosphere

Premium

Lime natural paint with
graphenstone technology
INTERIOR

AmbientPro+

Premium

Natural photocatalytic paint with
graphenstone technology
EXTERIOR / INTERIOR

Proshield

Premium

Conductive shielding paint with
graphenstone technology
EXTERIOR / INTERIOR

White



1L | 2.5L* | 3L* | 4L | 10L* | 12.5L | 15L | 20L*
*International markets.

Biosphere Premium Ecological & Natural exterior paint with a matt white finish and free from toxic substances. Thanks to our formula based on 100% artisanal lime and Graphenstone technology, the product has excellent resistance, durability and breathability, as well as preventing condensation and absorbing CO2. It is ideal for construction, restoration and repainting.

White



1L | 2.5L* | 3L* | 4L | 10L* | 12.5L | 15L | 20L*
*International markets.

Ecosphere Premium Ecological & Natural interior paint with a matt white finish and free from toxic substances. Thanks to our formula based on 100% artisanal lime and Graphenstone technology, the product has excellent resistance, durability and breathability, as well as preventing condensation and absorbing CO2. It is ideal for construction, restoration and repainting.

White



1L | 2.5L* | 3L* | 4L | 5L* | 12.5L | 15L | 20L*
*International markets.

AmbientPro+ Premium Ecological & Natural Photocatalytic Paint that purifies the air and reduces odors from the environment. The product has a matte finish, is free of toxic substances and is suitable for interior and exterior applications. Thanks to our formula based on 100% artisanal lime and Graphenstone technology, the product has excellent resistance, durability and breathability, as well as preventing condensation and absorbing CO2.



1L | 3L* | 4L | 5L* | 12.5L | 15L | 20L*
*International markets.

Proshield Premium Ecological & Natural paint for protection against high-frequency electromagnetic radiation and low-frequency electric fields. Shielding efficiency of 32 dB at 900 MHz (IEEE 299:2006). Made with Graphenstone technology that provides an improvement in conductivity thanks to the graphite particles. Free of VOC emissions.

| | |
|------------------------|--------------------------|
| PERFORMANCE (2 coats) | 6-9 m²/L |
| PERFORMANCE (1 coat) | 12-18 m²/L |
| DRYING (between coats) | 2-4 hours |
| TOTAL DRYING | 24 hours |
| APPLICATION TOOLS | Brush, roller or airless |
| TOOLS CLEANING | Water |
| COVERING POWER | Excellent |
| WASHABILITY | Good |
| FINISH | Natural matte |
| COLOURS | White / Soft Selection |

| | |
|------------------------|--------------------------|
| PERFORMANCE (2 coats) | 6-9 m²/L |
| PERFORMANCE (1 coat) | 12-18 m²/L |
| DRYING (between coats) | 2-4 hours |
| TOTAL DRYING | 24 hours |
| APPLICATION TOOLS | Brush, roller or airless |
| TOOLS CLEANING | Water |
| COVERING POWER | Excellent |
| WASHABILITY | Good |
| FINISH | Natural matte |
| COLOURS | White / Soft Selection |

| | |
|------------------------|--------------------------|
| PERFORMANCE (2 coats) | 6-9 m²/L |
| PERFORMANCE (1 coat) | 12-18 m²/L |
| DRYING (between coats) | 2-4 hours |
| TOTAL DRYING | 24 hours |
| APPLICATION TOOLS | Brush, roller or airless |
| TOOLS CLEANING | Water |
| COVERING POWER | Excellent |
| WASHABILITY | Good |
| FINISH | Natural matte |
| COLOURS | White / Soft Selection |

| | |
|------------------------|--|
| PERFORMANCE (1 coat) | 7-8 m²/L |
| DRYING (between coats) | 4-6 hours |
| TOTAL DRYING | 24 hours |
| APPLICATION TOOLS | Short hair roller or airless |
| TOOLS CLEANING | Water |
| PRODUCT APPEARANCE | Black |
| PROTECTION AGAINST | High frequency radiation & low frequency electric field. |
| SHIELDING EFFICIENCY | 32 dB of attenuation at 900 MHz (IEEE 299:2006). |



GrafClean

Therm

White

Premium

Thermal insulating ecological paint

EXTERIOR / INTERIOR

White



1L | 4L | 15L

Available formats

GrafClean Therm Premium Ecological & Natural paint ideal for improving the energy efficiency of your home thanks to its glass microspheres. Free of toxic substances and breathable. For interior and exterior use. Avoids humidity from condensation and prevents the proliferation of microorganisms. The product contains lime as a natural preservative, eliminating the use of chemical and/or carcinogenic substances. Made with Graphenstone technology, providing resistance and durability.



ECOLOGICAL PAINT
BREATHABLE



VERY GOOD
COVERING POWER
WASHABLE



REGULATES TEMPERATURE
AVOID CONDENSATIONS

| | |
|------------------------|------------------------------------|
| PERFORMANCE (2 coats) | 5-8 m²/L |
| PERFORMANCE (1 coat) | 10-16 m²/L |
| DRYING (between coats) | 2-4 hours |
| TOTAL DRYING | 24 hours |
| APPLICATION TOOLS | Brush or roller |
| TOOLS CLEANING | Water |
| COVERING POWER | Very good |
| WASHABILITY | Excellent |
| FINISH | Matte |
| COLOURS | White / Check colours availability |

GrafClean

Ag+

White

Premium

Ecological antimicrobial paint

INTERIOR

White



1L | 4L | 15L

Available formats

GrafClean Ag+ Premium Ecological & Natural paint for interior and exterior use with a white matt finish. Contains silver ion (Ag+) providing antimicrobial properties for the prevention of bacteria, fungi, viruses and protozoa. Free of toxic substances and breathable. It is indicated for sanitary areas such as hospitals, day-care centers, schools, clinics, etc. Made with Graphenstone technology, providing resistance and durability.



ANTIMICROBIAL
EFFECT



VERY GOOD
COVERING POWER
WASHABLE



BREATHABLE
PRODUCT

| | |
|------------------------|--------------------------|
| PERFORMANCE (2 coats) | 5-8 m²/L |
| PERFORMANCE (1 coat) | 10-16 m²/L |
| DRYING (between coats) | 2-4 hours |
| TOTAL DRYING | 24 hours |
| APPLICATION TOOLS | Brush, roller or airless |
| TOOLS CLEANING | Water |
| COVERING POWER | Very good |
| WASHABILITY | Excellent |
| FINISH | Matte |
| COLOURS | White |

GrafClean

Silky

Premium

Ecological paint with graphenstone technology

INTERIOR / EXTERIOR

White



1L | 4L | 15L

Available formats

GrafClean Ag+ Premium Ecological & Natural paint for interior use on low-porosity surfaces such as projected plaster or plasterboard. Free of toxic substances and breathable. The product has a smooth and silky matt finish, is breathable and washable. It contains lime as a natural preservative, eliminating the use of chemical and/or carcinogenic substances. Made with Graphenstone technology, providing resistance and durability.



ECOLOGICAL PAINT
BREATHABLE



WASHABLE
& RESISTANT



MATTE FINISH
SILKY SMOOTH

| | |
|------------------------|--------------------------|
| PERFORMANCE (2 coats) | 5-8 m²/L |
| PERFORMANCE (1 coat) | 10-16 m²/L |
| DRYING (between coats) | 2-4 hours |
| TOTAL DRYING | 24 hours |
| APPLICATION TOOLS | Brush, roller or airless |
| TOOLS CLEANING | Water |
| COVERING POWER | Very Good |
| WASHABILITY | Very Good |
| FINISH | Matte silky smooth |
| COLOURS | White |

22

23

Compare the range GrafClean

| GrafClean Silky Premium | GrafClean White Premium | GrafClean EXT White Premium | GrafClean FRONT Premium | GrafClean THERM White Premium | GrafClean Ag+ White Premium |
|---|---|---|---|---|---|
|  |  |  |  |  |  |
| NATURE VOCs & APEO free emulsion | NATURE VOCs & APEO free emulsion | NATURE VOCs & APEO free emulsion | NATURE Ecological acrylic | NATURE VOCs & APEO free emulsion + Glass microspheres | NATURE VOCs & APEO free emulsion + Silver Ion |
| EMISSIONS Low VOC emissions | EMISSIONS Free of VOC emissions (Class A+) | EMISSIONS Low VOC emissions | EMISSIONS Low VOC emissions | EMISSIONS Free of VOC emissions (Class A+) | EMISSIONS Free of VOC emissions (Class A+) |
|  |  |  |  |  |  |
| USE Interior | USE Exterior / Interior | USE Exterior | USE Exterior | USE Exterior / Interior | USE Interior / Exterior |
| EFFECT - | EFFECT Moisture control | EFFECT Anti-fungi / Anti-algae | EFFECT UV-Ray resitant | EFFECT Thermal insulating Anti-condensation | EFFECT Antimicrobial action |
| FINISH Silky and smooth matte | FINISH Matte | FINISH Matte | FINISH Matte | FINISH Matte | FINISH Matte |
| BREATHABILITY ★★★★★ | BREATHABILITY ★★★★★ | BREATHABILITY ★★★★★ | BREATHABILITY ★★★★☆ | BREATHABILITY ★★★★★ | BREATHABILITY ★★★★★ |
| WASHABILITY ★★★★★ | WASHABILITY ★★★★★ | WASHABILITY ★★★★★ | WASHABILITY ★★★★★ | WASHABILITY ★★★★★ | WASHABILITY ★★★★★ |
| COVERING POWER ★★★★★ | COVERING POWER ★★★★★ | COVERING POWER ★★★★★ | COVERING POWER ★★★★★ | COVERING POWER ★★★★★ | COVERING POWER ★★★★★ |
| ADHESION, RESISTANCE & DURABILITY ★★★★★ | ADHESION, RESISTANCE & DURABILITY ★★★★★ | ADHESION, RESISTANCE & DURABILITY ★★★★★ | ADHESION, RESISTANCE & DURABILITY ★★★★★ | ADHESION, RESISTANCE & DURABILITY ★★★★★ | ADHESION, RESISTANCE & DURABILITY ★★★★★ |
| FLEXIBILITY RESISTANCE TO PEELING ★★★★★ | FLEXIBILITY RESISTANCE TO PEELING ★★★★★ | FLEXIBILITY RESISTANCE TO PEELING ★★★★★ | FLEXIBILITY RESISTANCE TO PEELING ★★★★★ | FLEXIBILITY RESISTANCE TO PEELING ★★★★★ | FLEXIBILITY RESISTANCE TO PEELING ★★★★★ |
| GRAPHENSTONE TECHNOLOGY  | GRAPHENSTONE TECHNOLOGY  | GRAPHENSTONE TECHNOLOGY  | GRAPHENSTONE TECHNOLOGY  | GRAPHENSTONE TECHNOLOGY  | GRAPHENSTONE TECHNOLOGY  |

Premium

FINISHES

- Kratzputz Premium
Textured natural coating
- Stuki Premium
Venetian stucco natural coating

Kratzputz

Premium

Natural textured coating with
graphenstone technology
EXTERIOR / INTERIOR



1L | 4L | 15L

Available formats

Kratzputz Premium Ecological & Natural coating with structured finish. Ideal for decorating facades in areas where there are extreme weather conditions or zones of intense rain or snow. Also for use in textured interiors. Thanks to our formula based on 100% artisanal lime and Graphenstone technology, the product has excellent workability, is passable and absorbs CO2.



BREATHABLE
PURIFIES THE
ENVIRONMENT



ABSORBS CO2
SUSTAINABLE
PRODUCT



HIGH RESISTANCE
TO EXTREME WEATHER
CONDITIONS

| | |
|----------------------|---|
| PERFORMANCE (1 coat) | 3-4 L/m² |
| TOTAL DRYING | 24 hours |
| APPLICATION TOOLS | Metallic trowel |
| TOOLS CLEANING | Water |
| FINISH | Matte / Textured |
| COLOURS | White |
| APPLICATION SURFACES | All types of common surfaces in construction: mortar, brick, concrete, etc. |



Stuki

Premium

Venetian stucco natural coating
EXTERIOR / INTERIOR

White



Colour^(*)

1L (b) | 3L (b)** | 4L (b) | 5L (b)** | 12.5L (b) | 15L (b) | 20L (b)**

**International markets | (b) Bi-component format.

Stuki Ecological & Natural Premium Stucco based on 100% artisanal lime. With Graphenstone technology, the product has excellent workability, is walkable and absorbs CO2. Allows a great versatility of high decoration works both in interiors and exteriors. Ideal for works under the criteria of sustainable building, rehabilitation or restoration of historical buildings.



ABSORBS CO2
SUSTAINABLE
PRODUCT



MARBLE EFFECT
FINISH



GLOSS
FINISH

| | |
|------------------------|--|
| PERFORMANCE (2 coats) | 4-5 m²/L |
| DRYING (between coats) | 30 min. |
| POLISHING (by hand) | 30-40 min. |
| POLISHING (by machine) | 90 min. |
| APPLICATION TOOLS | Stucco trowel or Japanese finishing trowels, electric polisher (optional) |
| TOOLS CLEANING | Water |
| FINISH | Marble / Glossy |
| COLOURS | White GCS 980 Interior / GCS 322 Exterior |



Premium

MORTARS & PUTTIES

MortarBase *Premium*

Natural coarse mortar

MortarFine *Premium*

Natural fine mortar

MortarSuper *Premium*

Natural superfine mortar

Naturglue *Premium*

Natural adhesive mortar

MinerMastic *Premium*

Mineral renovation putty

EcoPutty P64 *Premium*

Natural smoothing & repairing putty

MortarBase

Premium

Natural lime based mortar
with graphenstone technology
COARSE FINISH



Kalgraphin Premium is a liquid lime putty with graphene for mortars preparation.

13.5 Kg + 4.5 Kg (Bi-component)
MortarBase Premium + Kalgraphin Premium

MortarBase Premium Ecological & Natural bi-component mortar of Premium quality. Made with authentic and traditional 100% artisanal lime and Graphenstone technology, providing resistance, durability and breathability, avoiding condensation and absorbing CO2. The product features high permeability to water vapour, low water absorption and excellent adherence. To be applied as a first regulating layer it is ideal for plastering, new construction grouting, rehabilitation and restoration of buildings.



BREATHABLE
ABSORBS CO₂



HIGH ADHERENCE
& FLEXIBILITY



LOW WATER
ABSORPTION

MortarFine

Premium

Natural lime based mortar
with graphenstone technology
FINE FINISH



Kalgraphin Premium is a liquid lime putty with graphene for mortars preparation.

13.5 Kg + 4.5 Kg (Bi-component)
MortarFine Premium + Kalgraphin Premium

MortarFine Premium Ecological & Natural bi-component mortar of premium quality. Made with authentic and traditional 100% artisanal lime and Graphenstone technology, providing resistance, durability and breathability, avoiding condensation and absorbing CO2. It features high permeability to water vapour, low water absorption, excellent adherence and good workability. The product is applied in one or two coats depending on the type of finishings such as smooth textures, troweled, engraved, hammered, ashlar, sgraffito, etc. Ideal for plastering in new construction, rehabilitation and restoration of historical buildings.



BREATHABLE
ABSORBS CO₂



HIGH ADHERENCE
& FLEXIBILITY



LOW WATER
ABSORPTION

| | |
|------------------------|--|
| PERFORMANCE (2-3 mm) | 3 Kg/m ² |
| DRYING (between coats) | 24-48 hours |
| DRYING (painting) | 4 days |
| APPLICATION TOOLS | Trowel. Finishing trowel. |
| TOOLS CLEANING | Water |
| FINISH | Fine |
| COLOURS | White / GCS 322 Exterior |
| APPLICATION SURFACES | Prefabricated panels, concrete, paint, tiles, etc. |



MortarSuper

Premium

Natural lime based mortar
with graphenstone technology
SUPERFINE FINISH



Kalgraphin Premium is a liquid lime putty with graphene for mortars preparation.

11.25 Kg + 4.5 Kg (Bi-component)
MortarSuper Premium + Kalgraphin Premium

MortarSuper Premium Ecological & Natural bi-component mortar of premium quality. Made with authentic and traditional 100% artisanal lime and Graphenstone technology, providing resistance, durability and breathability, avoiding condensation and absorbing CO2. The product features high permeability to water vapour, low water absorption, excellent adherence and good workability. Ideal for highly decorative finishes.



BREATHABLE
ABSORBS CO₂



HIGH ADHERENCE
& FLEXIBILITY



LOW WATER
ABSORPTION

| | |
|------------------------|--|
| PERFORMANCE (1-2 mm) | 3.5 Kg/m ² |
| DRYING (between coats) | 24-48 hours |
| DRYING (painting) | 4 days |
| APPLICATION TOOLS | Trowel. Finishing trowel. |
| TOOLS CLEANING | Water |
| FINISH | Superfine |
| COLOURS | White / GCS 322 Exterior |
| APPLICATION SURFACES | Prefabricated panels, concrete, paint, tiles, etc. |



Naturglue

Premium

Natural lime base adhesive mortar
with graphenstone technology
FLEXIBLE REPAIRING MORTAR



Kalgraphin Premium is a liquid lime putty with graphene for mortars preparation.

13 Kg + 4.5 Kg (Bi-component) | 2.9 Kg (Box) (Bi-component)
Naturglue Premium + Kalgraphin Premium

Naturglue Premium is an ecological adhesive mortar of great flexibility and high quality. Ideal for bonding ceramic tiles and as a bonding agent for insulation boards (ETICS) and non-flooding solutions. The product is also suitable for the renovation, rehabilitation and restoration of historical buildings. It is an ecological & natural bi-component solution made with authentic and traditional 100% artisanal lime and Graphenstone technology, providing resistance, durability and breathability, avoiding condensation and absorbing CO2. It features high permeability to water vapour, low water absorption, excellent adherence and good workability.



BREATHABLE
ABSORBS CO₂



HIGH ADHERENCE
& FLEXIBILITY



LOW WATER
ABSORPTION

| | |
|------------------------|---|
| PERFORMANCE (5 mm) | 5 Kg/m ² |
| DRYING (between coats) | 24-48 hours |
| DRYING (finishing) | 24-48 hours |
| APPLICATION TOOLS | Trowel, notched trowel, brush. |
| TOOLS CLEANING | Water |
| PRODUCT APPEARANCE | Sand colour |
| APPLICATION SURFACES | All types of common surfaces in construction: mortar, brick, concrete, prefabricated plates, etc. |



MinerMastic

Premium

Mineral renovation putty with
graphenstone technology
REPAIR SMALL SURFACE DEFECTS



0.75L | 4L | 12.5L
Available formats

MinerMastic Premium Repair putty for surface irregularities and filling of small cracks, holes and surface fissures (1-3 mm). Ideal for smoothing rough surfaces, large surface imperfections and repairing chips in existing paintwork.



REPAIRS SURFACE
IRREGULARITIES



FILLS
PLATE JOINTS



GOOD
SANDABILITY

| | |
|--------------------|------------------------------------|
| PERFORMANCE | 0.6-0.7 kg/m² |
| TOTAL DRYING | 24 hours |
| APPLICATION TOOLS | Spatula or trowel |
| TOOLS CLEANING | Water |
| PRODUCT APPEARANCE | Beige powder |
| FINISH | Fine texture |
| USE | Interiors and exteriors under roof |



EcoPutty

P64
Premium

Natural smoothing & repairing putty
SMOOTH & REPAIR LARGE SURFACE DEFECTS



15 Kg
Available formats

Ecoputty Premium Natural putty for smoothing rough surfaces, large surface irregularities, repairing scaling or blistering of existing paintwork with less than 3 mm deterioration. Also suitable for levelling the surface in the assembly system of prefabricated panels or wooden boards.



SMOOTHS & REPAIRS
LARGE SURFACES



EXCELLENT
ADHESION



FLEXIBLE
NO CRACKING

| | |
|--------------------|-------------------------|
| PERFORMANCE (1 mm) | 0.5-1.5 kg/m² |
| TOTAL DRYING | 24 hours |
| APPLICATION TOOLS | Trowel |
| TOOLS CLEANING | Water |
| PRODUCT APPEARANCE | Beige powder |
| FINISH | Mineral texture |
| USE | Interiors and exteriors |



Nature

PAINTS

Zennature
Natural paint for interiors

Housenature
Mineral paint for exteriors

Coatexture
Textured mineral paint

TREATMENTS

WaterProof
Waterproof coating for roofs

GraffitiClear
Anti-graffiti coating

MORTARS

NaturMortar BASE
Natural hydraulic lime mortar

NaturMortar FINE
Natural hydraulic lime mortar

NaturMortar GLUE
Natural hydraulic lime adhesive mortar

Zennature

Natural paint with graphenstone technology
INTERIOR / EXTERIOR (UNDER ROOF)

White



1L | 4L | 12.5L | 15L
Available formats

Zennature Ecological paint for interiors with a fine matt finish, free of toxic substances and breathable. High quality product with Graphenstone technology and lime as a natural preservative, eliminating the use of chemical and/or carcinogenic substances. Suitable for construction, repainting and ideal for interior decoration.



NATURAL PAINT
BREATHABLE



FREE OF
VOC EMISSIONS



SMOOTH
FINISH

Housenature

Mineral paint with graphene
EXTERIOR / INTERIOR

White



1L | 4L | 15L
(1) Check colour availability (min. order 280L)

Housenature Ecological mineral paint for exteriors, free of toxic substances and breathable. High quality product with Graphenstone technology. The product has a fine matt white finish and is highly resistant and durable. Contains lime as a natural preservative, eliminating the use of chemical and/or carcinogenic substances. Suitable for construction and repainting and ideal for decorating exteriors.



MINERAL PAINT
BREATHABLE



FREE OF
VOC EMISSIONS



WEATHER
RESISTANT

Coatexture

Textured mienral paint with
graphenstone technology
EXTERIOR / INTERIOR



1L | 3L* | 4L | 12.5L | 15L | 20L*
*International markets.

Coatexture High quality ecological mineral paint with Graphenstone technology. Ideal for decorating facades and interiors with a textured finish. It is breathable, prevents condensation and does not crack.



MINERAL PAINT
BREATHABLE



TEXTURED
FINISH

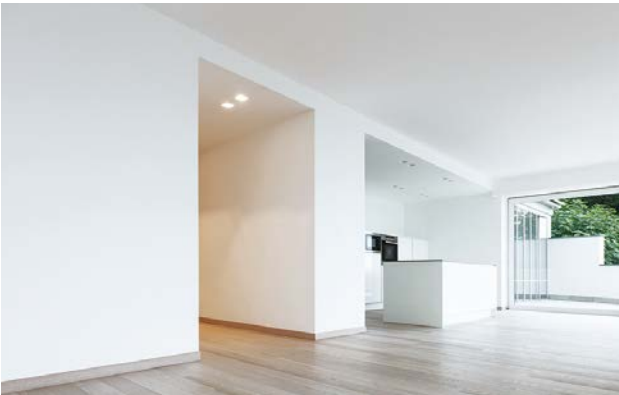


FLEXIBLE
NO CRACKING

| | |
|------------------------|--------------------------|
| PERFORMANCE (2 coats) | 5-8 m²/L |
| PERFORMANCE (1 coat) | 10-16 m²/L |
| DRYING (between coats) | 2-4 hours |
| TOTAL DRYING | 24 hours |
| APPLICATION TOOLS | Brush, roller or airless |
| TOOLS CLEANING | Water |
| COVERING POWER | Very good |
| WASHABILITY | Medium |
| FINISH | Smooth matte |
| COLOURS | White |

| | |
|------------------------|-------------------------------------|
| PERFORMANCE (2 coats) | 5-8 m²/L |
| PERFORMANCE (1 coat) | 10-16 m²/L |
| DRYING (between coats) | 2-4 hours |
| TOTAL DRYING | 24 hours |
| APPLICATION TOOLS | Brush, roller or airless |
| TOOLS CLEANING | Water |
| COVERING POWER | Very good |
| WASHABILITY | Good |
| FINISH | Mineral matte |
| COLOURS | White / Check colours availability. |

| | |
|----------------------|---|
| PERFORMANCE (1 coat) | 4-5 m²/L |
| TOTAL DRYING | 24 hours |
| APPLICATION TOOLS | Stipple roller or brush |
| TOOLS CLEANING | Water |
| FINISH | Matte / Textured |
| COLOURS | White / Soft Selection |
| APPLICATION SURFACES | All types of common surfaces in construction: mortar, brick, concrete, old paints, etc. |



WaterProof

Waterproof coating with
graphenstone technology
ROOFS TREATMENT



1L | 4L | 15L

Available formats

WaterProof Water-based waterproofing solution for roofing treatment. Ideal to protect terraces and roofs from water filtration and/or accumulation. The product penetrates into small cracks forming a continuous waterproof and elastic layer. Easy to apply, excellent adhesion and resistant to weathering.



WATERPROOF
TO RAIN WATER



WEATHER
RESISTANT



HIGH ELASTICITY
ABRASION RESISTANCE

| PERFORMANCE (minimum) | 1L/m ² per coat |
|-----------------------|--|
| TOTAL DRYING | 24 hours |
| APPLICATION TOOLS | Brush or roller |
| TOOLS CLEANING | Water |
| FINISH | Matte |
| APPLICATION SURFACES | Roofs |
| COLOURS | <div><div>RED</div><div>GREEN</div><div>GREY</div><div>WHITE</div></div> |



GraffitiClear

Anti-graffiti coating
VERTICAL SURFACES



1L | 2.5L | 4L | 5L | 12.5L | 15L

Available formats

GraffitiClear Hydrophobic and oil repellent treatment made in water base for the protection of vertical surfaces. Prevents graffiti, stains and other greasy substances from penetrating the surface. Suitable for easing the cleaning of graffiti on facades.



NOT ALTER
THE BREATHABILITY
OF THE SUPPORT



EXCELLENT
WATER-REPELLENT
POWER



HIGH
OLEOPHOBIC
POWER

| PERFORMANCE | 250-350 g/m ² |
|------------------------|---|
| DRYING (between coats) | 10-15 min. |
| TOTAL DRYING | 5 days (total curation) |
| APPLICATION TOOLS | Brush, roller or spray gun |
| TOOLS CLEANING | Water |
| PRODUCT APPEARANCE | Whitish liquid |
| FINISH | Transparent |
| APPLICATION SURFACES | Vertical porous surfaces such as terracotta, marble, mortar, concrete or similar. |



NaturMortar BASE

Natural hydraulic lime mortar
COARSE FINISH



25 Kg

Available formats

NaturMortar Base High quality, ecological, natural hydraulic lime mortar (NHL). Free of artificial hydrolyzing additives. To be applied as a bonding mortar and/or as a first regulating layer. Ideal for plastering, new construction grouting, rehabilitation and restoration of buildings.

Rendering grouts and as a first regulation coat in
rehabilitation, restoration and new works.



BREATHABLE
ABSORBS CO₂



GOOD
WORKABILITY



GOOD
MECHANICAL
RESISTANCE

| | |
|-----------------------------|--------------------------------------|
| PERFORMANCE (1 cm) | 20-23 Kg/m ² |
| DRYING (as gripping mortar) | 3-4 hours |
| DRYING (between coats) | 24-48 hours |
| APPLICATION TOOLS | Brush, trowel or projecting machine. |
| TOOLS CLEANING | Water |
| FINISH | Coarse |
| COLOURS | Off white |



NaturMortar FINE

Natural hydraulic lime mortar
FINE FINISH



25 Kg

Available formats

NaturMortar Fine High quality, ecological, natural hydraulic lime mortar (NHL). Free of artificial hydrolyzing additives. Ideal for plastering in new construction, rehabilitation and restoration of buildings.

Plastering and smooth finishes in rehabilitation,
restoration and new works.



BREATHABLE
ABSORBS CO₂



GOOD
WORKABILITY



GOOD
MECHANICAL
RESISTANCE

| | |
|------------------------|---------------------------|
| PERFORMANCE (1 cm) | 15-16 Kg/m ² |
| DRYING (between coats) | 24-48 hours |
| DRYING (finishing) | 4 days |
| APPLICATION TOOLS | Trowel. Finishing trowel. |
| TOOLS CLEANING | Water |
| FINISH | Fine |
| COLOURS | Off white |



NaturMortar GLUE

Natural hydraulic lime adhesive mortar
ADHESIVE REPAIRING MORTAR



25 Kg
Available formats

NaturMortar Glue High quality, ecological, natural hydraulic lime adhesive mortar (NHL). Free of artificial hydrolyzing additives. Ideal for bonding ceramic tiles and as a bonding agent for insulation boards (ETICS) and non-flood solutions. Also for the rehabilitation and restoration of historical buildings.

Bonding tiles, ceramics and as a anchor for insulation boards (EIFS) in rehabilitation, restoration and new works.



BREATHABLE
ABSORBS CO₂



GOOD
WORKABILITY



GOOD
MECHANICAL
RESISTANCE

| | |
|------------------------|--------------------------|
| PERFORMANCE (5 mm) | 3.5 kg/m ² |
| DRYING (between coats) | 24-48 hours |
| DRYING (finishing) | 4 days |
| APPLICATION TOOLS | Trowel or notched trowel |
| TOOLS CLEANING | Water |
| COLOUR | Sand |



Nevada

PAINTS

Nevada-Dúo
Exterior/Interior

Nevada-Ultra
Interior/Exterior

Nevada-Super
Exterior/Interior

Nevada-Plus
Interior

Nevada-DÚO

Exterior/Interior



1L | 4L | 15L

Nevada-DÚO Professional ecological paint, with a matt white finish and free of toxic substances. Ideal for interiors and exteriors. The product is breathable and contains lime as a natural preservative, eliminating the use of chemical and/or carcinogenic substances. Made with Graphenstone technology, providing resistance and durability.

| | |
|------------------------|--|
| PERFORMANCE (2 coats) | 5-8 m²/L |
| PERFORMANCE (1 coats) | 10-16 m²/L |
| DRYING (between coats) | 2-4 hours |
| TOTAL DRYING | 24 hours |
| APPLICATION TOOLS | Brush, roller or airless |
| CLEANING TOOLS | Water |
| COLOURS | White GCS 980 Interior / GCS 322 Exterior |

| | |
|-------------------------------------|---------------------|
| CUBRICIÓN POWER | ★★★★★★ |
| WHITENESS | ★★★★★★ |
| WASHABILITY | ★★★★★★ |
| FINISH | Mate |
| GRAPHENSTONE TECNOLOGY | ✓ |
| BREATHABILITY | ★★★★ |
| ADHESION, RESISTANCE AND DURABILITY | ★★★★★★ |
| FLEXIBILITY | ★★★★★★ |
| USE | Exterior / Interior |
| FREE OF VOC EMISSIONS | ✓ |

Nevada-Ultra

Interior



1L | 4L | 15L

Nevada-Ultra Professional ecological paint, with a matt white finish and free of toxic substances. Ideal for interiors. The product is breathable and contains lime as a natural preservative, eliminating the use of chemical and/or carcinogenic substances. Made with Graphenstone technology, providing resistance and durability.

| | |
|------------------------|--|
| PERFORMANCE (2 coats) | 5-8 m²/L |
| PERFORMANCE (1 coats) | 10-16 m²/L |
| DRYING (between coats) | 2-4 hours |
| TOTAL DRYING | 24 hours |
| APPLICATION TOOLS | Brush, roller or airless |
| CLEANING TOOLS | Water |
| COLOURS | White GCS 980 Interior / GCS 322 Exterior |

| | |
|-------------------------------------|---------------------|
| CUBRICIÓN POWER | ★★★★★★ |
| WHITENESS | ★★★★★★ |
| WASHABILITY | ★★★★ |
| FINISH | Mate |
| GRAPHENSTONE TECNOLOGY | ✓ |
| BREATHABILITY | ★★★★ |
| ADHESION, RESISTANCE AND DURABILITY | ★★★★ |
| FLEXIBILITY | ★★★★★★ |
| USE | Interior / Exterior |
| FREE OF VOC EMISSIONS | ✓ |

Nevada-Super

Exterior/Interior



4L | 15L

Nevada-Super Professional ecological paint with a matt white finish. Ideal for interiors and exteriors. The product is breathable and contains lime as a natural preservative, eliminating the use of chemical and/or carcinogenic substances. Made with Graphenstone technology, providing resistance and durability. Excellent quality-price ratio.

| | |
|------------------------|--------------------------|
| PERFORMANCE (2 coats) | 5-8 m²/L |
| PERFORMANCE (1 coats) | 10-16 m²/L |
| DRYING (between coats) | 2-4 hours |
| TOTAL DRYING | 24 hours |
| APPLICATION TOOLS | Brush, roller or airless |
| CLEANING TOOLS | Water |
| COLOURS | White |

| | |
|-------------------------------------|---------------------------------|
| CUBRICIÓN POWER | ★★★★ |
| WHITENESS | ★★★★ |
| WASHABILITY | ★★★★ |
| FINISH | Mate |
| GRAPHENSTONE TECNOLOGY | ✓ |
| BREATHABILITY | ★★ |
| ADHESION, RESISTANCE AND DURABILITY | ★★★★ |
| FLEXIBILITY | ★★ |
| USE | Exterior / Interior profesional |
| LOW OF VOC EMISSIONS | Low of VOC |

Nevada-Plus

Interior



4L | 15L

Nevada-Plus Professional ecological paint with a matt white finish. Ideal for interiors. The product is breathable and contains lime as a natural preservative, eliminating the use of chemical and/or carcinogenic substances. Made with Graphenstone technology, providing resistance and durability. Excellent quality-price ratio.

| | |
|------------------------|--------------------------|
| PERFORMANCE (2 coats) | 5-8 m²/L |
| PERFORMANCE (1 coats) | 10-16 m²/L |
| DRYING (between coats) | 2-4 hours |
| TOTAL DRYING | 24 hours |
| APPLICATION TOOLS | Brush, roller or airless |
| CLEANING TOOLS | Water |
| COLOURS | White |

| | |
|-------------------------------------|----------------------|
| CUBRICIÓN POWER | ★★★ |
| WHITENESS | ★★★★ |
| WASHABILITY | ★ |
| FINISH | Mate |
| GRAPHENSTONE TECNOLOGY | ✓ |
| BREATHABILITY | ★★ |
| ADHESION, RESISTANCE AND DURABILITY | ★★★ |
| FLEXIBILITY | ★ |
| USE | Interior profesional |
| LOW OF VOC EMISSIONS | Low of VOC |

Primers & treatments

PRIMERS

Filler

Mineral primer for paint

AmbientPrimer L42/L44

Primers for absorbent supports

Four2Four

Adherence primer for paints

Contak

Adherence primer for mortars

TREATMENTS

Hydroxeal

Water-repellent treatment

Neutralysal

Saltpeter-resistant treatment

StopWater

Anti-moisture treatment

Minerseal

Mineral sealer

BeeWax

Lime stucco & mortar protector

Filler

Mineral primer with graphenstone technology for paint
EXTERIOR / INTERIOR



1L | 3L* | 4L | 12.5L | 15L | 20L*
*International markets.

Filler Mineral primer made with Graphenstone technology. Ideal for leveling surfaces. Regulates the texture of the substrate, covers micro cracks (< 1 mm) and evens out repaired or scratched surfaces of former paint. For interior and exterior use. It is breathable, avoids condensation and does not crack.



BREATHABLE
PRODUCT



REGULATES
THE TEXTURE
OF THE SUPPORT



MATERIAL & LABOUR
SAVINGS

| | |
|----------------------|---|
| PERFORMANCE (1 coat) | 5-7 m²/L |
| DRYING (painting) | 4-6 hours |
| APPLICATION TOOLS | Brush or roller |
| TOOLS CLEANING | Water |
| PRODUCT APPEARANCE | Dense liquid |
| APPLICATION SURFACES | Deteriorated paints, surfaces with microcracks and/or irregular textures. |



AmbientPrimer

Primer for very absorbent supports
EXTERIOR / INTERIOR

L44 - Antialgae/mould L42



1L | 4L | 5L* | 10L* | 12.5L | 15L | 20L*
*International markets.

AmbientPrimer Primer for homogenizing and reducing the absorption of the substrate, leading to subsequent savings in paint. It also consolidates the substrate. Recommended for absorbent supports and/or with poor firmness. There are two versions: with and without anti-algae effect, L44 and L42 respectively.



NOT ALTER
THE BREATHABILITY
OF THE SUPPORT

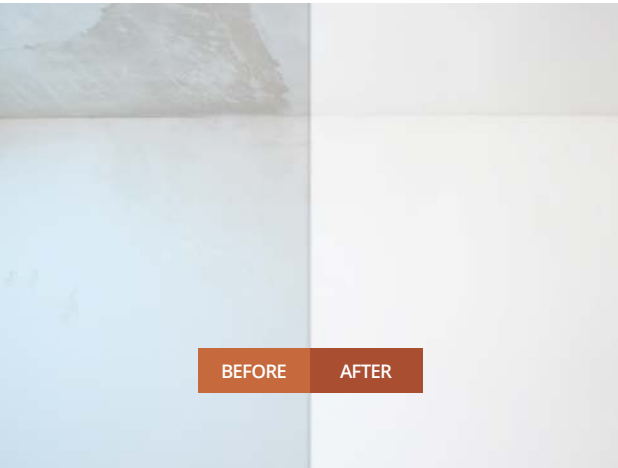


REGULATES
THE TEXTURE
OF THE SUPPORT



MATERIAL & LABOUR
SAVINGS

| | |
|----------------------|--|
| PERFORMANCE (1 coat) | 26-30 m²/L |
| TOTAL DRYING | 24 hours |
| APPLICATION TOOLS | Brush, roller or spray gun |
| TOOLS CLEANING | Water |
| PRODUCT APPEARANCE | Liquid / Colourless |
| APPLICATION SURFACES | All types of surfaces common in construction, excepting gypsum or perlite plaster. |



Four2Four

Adherence bridge, antioxidant & sealer
PAINTS, METALS & WOODS



0.75L | 4L
Available formats

Four2Four Bonding agent for paint that ensures its adherence on all types of surfaces such as tiles, phenolic panels and/or polyurethane paint. For interior and exterior use. It also acts as a rustproofing agent on metal surfaces (free of corrosion or oxidation) and as a sealant for wood, MDF panels and stains on interior walls.



EXCELLENT
ADHERENCE



ANTIOXIDANT
ON METAL SURFACES



SEALER
ON WOOD &
MDF BOARDS

| | |
|------------------------|---|
| PERFORMANCE (1 coat) | 10-11 m²/L |
| DRYING (between coats) | 30"-60" min. |
| DRYING (painting) | 6-8 hours |
| APPLICATION TOOLS | Brush, roller or spray gun |
| TOOLS CLEANING | Water |
| PRODUCT APPEARANCE | White liquid |
| APPLICATION SURFACES | Ceramics, polyurethane or epoxy paints, plasticized panels, etc. Also on metal or wood. |



Contak

Adherence bridge for mortars
MECHANICAL GRIP FOR SMOOTH SURFACES



1L | 3L* | 4L | 5L* | 12.5L | 15L | 20L*
*International markets.

Contak Bonding agent that ensures the adherence of plaster and adhesive mortars on smooth surfaces such as glass, ceramics, metals, wood and pressed concrete.



EXCELLENT
ADHERENCE



MECHANICAL GRIP
FOR MORTARS



EASY
TO APPLY

| | |
|----------------------|---|
| PERFORMANCE (1 coat) | 7-9 m²/L |
| TOTAL DRYING | 24 hours |
| APPLICATION TOOLS | Brush or roller |
| TOOLS CLEANING | Water |
| PRODUCT APPEARANCE | Red dense liquid |
| APPLICATION SURFACES | Smooth surfaces such as glass, ceramic, metals, wood, concrete smooth, etc. |



Neutralysal

Salt-peter-resistant treatment
WALL SANITATION



1L (Bottle) | 5L (Container)
Available formats

Neutralysal Colourless anti-salt-peter treatment to clean up walls damaged by salt-peter. It prevents the appearance of white stains caused by the absorption of water by capillarity and the dragging of salts from the wall. Suitable for interior and exterior use.



PROTECTION
AGAINST SALT-PETER

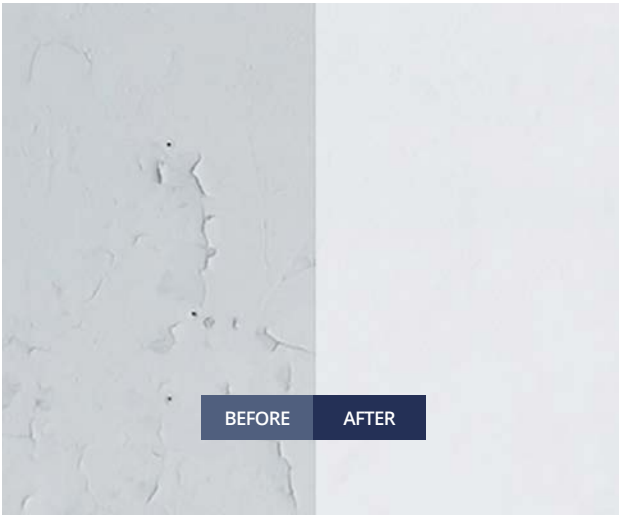


PREVENTS
WHITE SPOTS



HIGH RESISTANCE
& DURABILITY

| | |
|----------------------|----------------------------|
| PERFORMANCE (1 coat) | 7-8 m ² /L |
| TOTAL DRYING | 24 hours |
| APPLICATION TOOLS | Brush, roller or spray gun |
| TOOLS CLEANING | Water |
| PRODUCT APPEARANCE | Yellowish liquid |



Hydroxeal

Water-repellent treatment for mineral paints & mortars
HUMID OR ATMOSPHERICALLY POLLUTED AREAS



1L (Bottle) | 5L (Container)
Available formats

Hydroxeal Hydrophobic treatment that acts as a barrier against liquids and humidity, preventing water penetration while maintaining the breathability of the substrate. The product is colourless and does not clog the pores, allowing the water vapour diffusion and not further altering the problem.



NOT ALTER
THE BREATHABILITY
OF THE SUPPORT

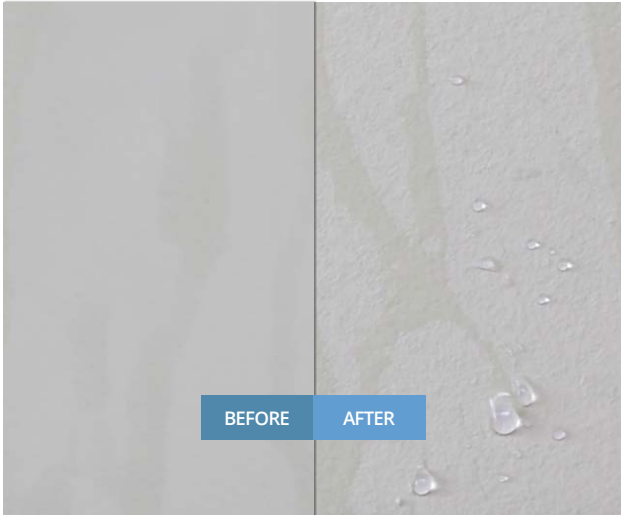


IDEAL FOR
HUMID AREAS



PENETRATES
INTO THE SUPPORT

| | |
|---------------------|---|
| PERFORMANCE | 100-200 ml/m ² (on mineral paints) 400-500 ml/m ² (on mineral mortars) |
| TOTAL DRYING | 24 hours |
| APPLICATION TOOLS | Brush, roller or spray gun |
| TOOLS CLEANING | Water |
| APPEARANCE / FINISH | Whitish liquid / Colourless |



StopWater

Anti-moisture treatment prior painting
RETAINS THE MOISTURE OF THE WALL



1L (Bottle) | 5L (Container)
Available formats

StopWater Anti-dampness treatment that creates a temporary barrier to retain the humidity of the wall enabling to paint correctly. The product is degraded by the high pH of Graphenstone paints.



REGULATES
ABSORPTION
OF THE SUPPORT

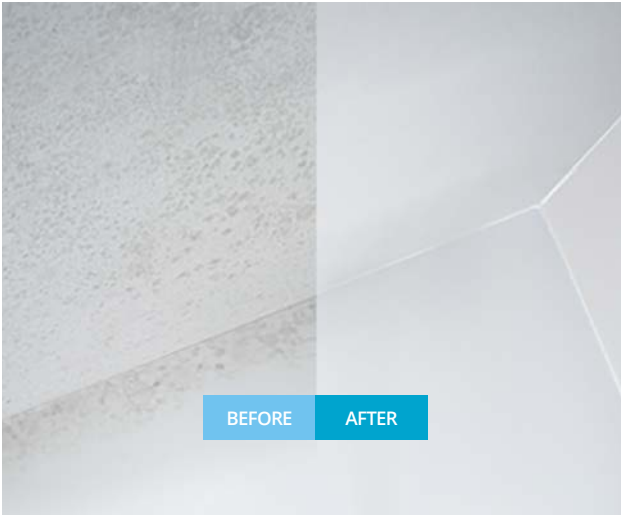


MOISTURE BARRIER
FACILITATES PAINTING



NOT FILM
FORMING

| | |
|----------------------|----------------------------|
| PERFORMANCE (1 coat) | 24-28 m ² /L |
| DRYING (painting) | 6-12 hours |
| APPLICATION TOOLS | Brush, roller or spray gun |
| TOOLS CLEANING | Water |
| PRODUCT APPEARANCE | Liquid |



Minerseal

Consolidating & protecting mineral treatment
CONSOLIDATES & PROTECTS THE SUPPORT



1L (Bottle) | 5L (Container) | 15L
Available formats

Minerseal is a mineral consolidating treatment that does not affect the permeability of the substrate to gases and water vapour. It protects mineral finishes, consolidates detached substrates and reduces the absorption of highly absorbent substrates.



HIGHLY
BREATHABLE

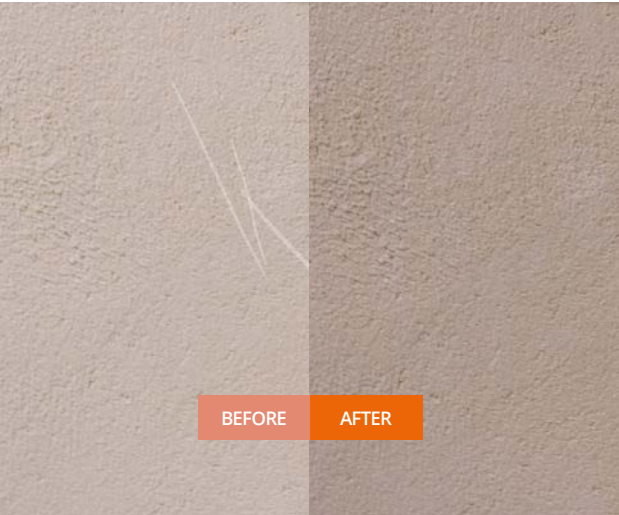


PROTECTS
MINERAL FINISHES



HIGH RESISTANCE
& DURABILITY

| | |
|----------------------|--|
| PERFORMANCE (1 coat) | 13-16 m ² /L |
| TOTAL DRYING | 24 hours |
| APPLICATION TOOLS | Brush, roller or spray gun |
| TOOLS CLEANING | Water |
| APPEARANCE / FINISH | Whitish liquid / Colourless |
| APPLICATION SURFACES | Exposed or prefabricated concrete elements, calcareous sandstone, etc. |



BeeWax

Premium

Natural beeswax treatment

LIME STUCCO & MORTAR PROTECTOR



0.75L | 4L

Available formats

BeeWax Natural beeswax for the protection of lime stucco. It prevents the penetration of water and its contaminants without altering the permeability of the substrate to gases and water vapour. It also prevents the depigmentation of intense colours.



NATURAL
BEESWAX
BASIS



NOT ALTER
THE BREATHABILITY
OF THE SUPPORT



PROTECTION OF
LIME STUCCO &
MORTARS

| | |
|------------------------|------------------------------------|
| PERFORMANCE (1 coat) | 30-40 m²/L |
| DRYING (between coats) | 24 hours |
| DRYING (mop polishing) | 30-60 min. |
| TOTAL DRYING | 24 hours |
| APPLICATION TOOLS | Sponge, trowel or short hair glove |
| TOOLS CLEANING | Water |
| APPEARANCE / FINISH | Cream / Colourless |
| APPLICATION SURFACES | Lime stucco & mortar |





GRAPHENSTONE

THE ORIGINAL & AUTHENTIC

The texture of lime has value, the beauty of lime is reflected in the nuances that appear during its application, the traces of the spatulas, of the trowels, the irregularities that are recognizable by sight and touch, arousing a sensory experience.

The colors of the earth are essential to the origins of Graphenstone. The light sand tone that creates the lime in mixture with the aggregate is one of those that expresses best our identity.

From these concepts we have developed a 16-colour chart based on the tonalities of the earth and of 8 different textures that merge with our design concept.

The Earth Collection

GRAPHEN
STONE
The Earth Collection

Health

Naturalness is accompanied by health care. Graphenstone produces materials that help to live better and make our home a healthy environment, away from the harmful components of conventional plastic products.

Sustainability

A range of products that are as eco-friendly as they are healthy and free of harmful substances. Our goal is to achieve the well-being of people and the positive impact on the environment.



Nature

As natural as a second skin of each person in their home. Familiar spaces are created and at the same time distant through the continuity of the material in the walls, floors and ceilings... Familiar yet different spaces are created through the continuity of the material in the walls, floors and ceilings; surrounding, cozy and pure spaces.

Timelessness

Looking for permanence in time, Graphenstone coatings endure beyond the ephemeral fashions and planned obsolescence; always getting architectural spaces.

Beauty

The beauty of lime is reflected in the nuances that appear during its application, the marks of the spatulas, the trowels, the irregularities that are recognizable by sight and touch, producing a sensory experience.

Technology

The innovation with Graphenstone technology has been the fundamental axis of the birth of Graphenstone materials. Thirst and the desire to reach the unexplored and a product that nobody had imagined before.



Artisanal

Graphenstone products are created looking for the artisan origin and the good work of past generations. The lime used is selected by hand and cooked in a wood oven in a millennial process and with a sustainable life cycle.

Wabi-sabi

Wabi-sabi is a Japanese aesthetic term that describes a type of aesthetic vision based on “the beauty of imperfection”. Combining attention to the composition of minimalism, with the warmth of objects from nature.



GRAPHEN STONE

The Earth Collection

The Earth Collection

PRODUCTS

Siena

Natural paint

Venetta

Venetian stucco

Modena

Continuous natural coating

Firenzza

Natural coating
for textured finishes

Ferrara V

Vertical lime coatings
protector

Ferrara H

Horizontal lime coatings
protector

Arezza

Decorative kit for woods

COLLECTION

The Colours.

A selection of 16 colors inspired by Mother Earth that evoke the primary origins of nature: earth, sand, water, stone and the passage of time on it.

Textures.

A selection of 8 textures that reflect the traces of efforts and the beauty of imperfection over spaces.

Shadows.

A selection of 4 varnishes for wood created to travel through time.
A fossil finish designed to protect while embellishing.

Siena

Natural lime base paint for interiors
NATURAL MATTE FINISH



15L | 4L | 0.75L

Natural lime paint, suitable for interior use and with a natural matt finish. Free of toxic substances, it is ideal for creating healthier decorative environments in your home, guaranteeing the breathability and healthiness of the building. The product is made with Graphenstone technology, providing resistance and durability.

| | |
|------------------------|--------------------------|
| PERFORMANCE (2 coats) | 6-9 m²/L |
| PERFORMANCE (1 coat) | 12-18 m²/L |
| DRYING (between coats) | 2-4 hours |
| TOTAL DRYING | 24 hours |
| APPLICATION TOOLS | Brush, roller or airless |
| TOOLS CLEANING | Water |
| FINISH | Natural matte |
| COLOURS | The Colours of the Earth |



Breathable
Absorbs CO₂



Free of VOC
emissions



Resistant &
Durable



Graphenstone
Technology



High Quality
Lime Base



Interior

Pigmentation

| | | |
|-------------|--------------|---------------|
| Siena 15L | x4 u. 250ml | Liquid Toner* |
| Siena 4L | x1 u. 250 ml | Liquid Toner* |
| Siena 0.75L | x1 u. 50 ml | Liquid Toner* |



*This product is sold separately

Venetta

Natural venetian stucco lime coating
MATTE OR GLOSS FINISH



15L (bi-material) | Kit 4L (bi-material)

Natural lime stucco free of toxic substances. It offers a great versatility of high decoration projects in interiors and exteriors, creating healthier decorative environments in your home. The product guarantees the breathability and healthiness of the building. It is made with Graphenstone technology, providing resistance and durability.

| | |
|------------------------|---|
| PERFORMANCE (2 coats) | 4-5 m²/L |
| DRYING (between coats) | 30 min. |
| POLISHING (by hand) | 30-40 min. |
| POLISHING (by machine) | 60-90 min. |
| TOTAL DRYING | 24 hours |
| APPLICATION TOOLS | Stucco trowel, electric polisher (optional) |
| TOOLS CLEANING | Water |
| GET A MATTE FINISH | Sand lightly |
| GET A GLOSSY FINISH | Polishing manually or with an electric polisher |
| COLOURS | The Colours of the Earth |



Breathable
Absorbs CO₂



Free of VOC
emissions



Resistant &
Durable



Graphenstone
Technology



High Quality
Lime Base



Interior
Exterior

Pigmentation

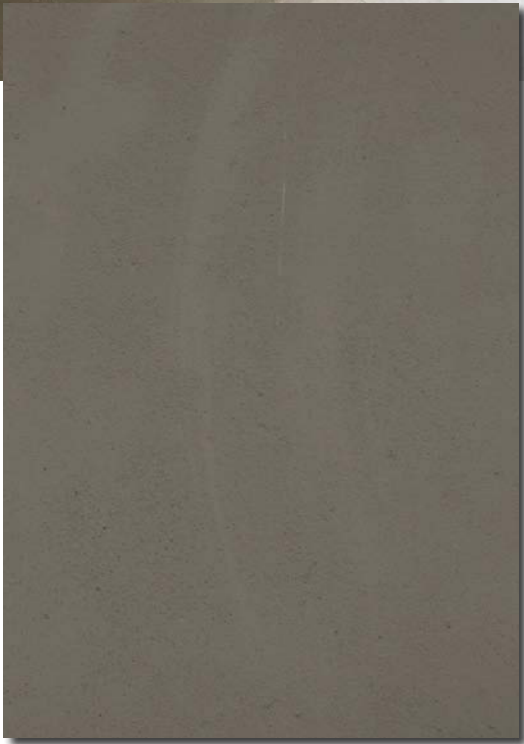
| | | |
|----------------|--------------|---------------|
| Venetta 15L | x4 u. 250ml | Liquid Toner* |
| Venetta Kit 4L | x1 u. 250 ml | Liquid Toner* |



*This product is sold separately

Modena

Continuous natural coating
WALLS & FLOORS



15.75Kg Bi-material | 4Kg Bi-material

Bi-component natural mortar of aerated lime with Graphenstone technology. Thanks to its technical properties, it can be processed as a continuous material allowing the same finish to be obtained on both vertical and horizontal surfaces. It creates an entirely mineral and highly breathable support. Suitable for construction, rehabilitation and restoration of historical buildings.

| | |
|---|---|
| PERFORMANCE (2-3 mm) | 5 Kg/m² |
| DRYING (between coats) | 24-48 hours |
| TOTAL DRYING | 4 days |
| DRYING (pedestrian traffic) | 7 days |
| APPLICATION TOOLS - Preparation - Application - Finish | Mechanical mixer, bucket. Trowel / Finishing: trowel. Finishing trowel. |
| TOOLS CLEANING | Water |
| COLOURS | The Colours of the Earth |



Breathable
Absorbs CO2



Free of VOC
emissions



Resistant &
Durable



Graphenstone
Technology



High Quality
Lime Base



Interior
Exterior

Pigmentation

| | | |
|-----------------|-------------|----------------|
| Modena 15.75 Kg | x4 u. 250ml | Solid Pigment* |
| Modena 4Kg | x1 u. 250ml | Solid Pigment* |



*This product is sold separately

Firenzza

Natural mortar for textured finishes
TEXTURED FINISHES



17Kg Bi-material | 4Kg Bi-material

Bi-component natural mortar of aerated lime with Graphenstone technology. Highly flexible and resistant material, ideal for creating highly decorative textures. Each texture has a specific technique from The Textures of the Earth. It creates an entirely mineral and highly breathable finish. Suitable for construction, rehabilitation and restoration of historical buildings.

| | |
|------------------------|---------------------------|
| PERFORMANCE (2-3 mm) | 3 Kg/m² |
| DRYING (between coats) | 24-48 hours |
| TOTAL DRYING | 4 days |
| APPLICATION TOOLS | Depends on texture |
| TOOLS CLEANING | Water |
| TEXTURE CREATION | The Textures of the Earth |
| COLOURS | The Colours of the Earth |

Create your texture inspired on the earth:
www.graphenstone.com/Texturas/ENG.pdf



Breathable
Absorbs CO2



Free of VOC
emissions



Resistant &
Durable



Graphenstone
Technology



High Quality
Lime Base



Interior
Exterior

Pigmentation

| | | |
|---------------|-------------|----------------|
| Firenzza 17Kg | x4 u. 250ml | Solid Pigment* |
| Firenzza 4Kg | x1 u. 250ml | Solid Pigment* |



*This product is sold separately

Ferrara

Lime coating protector
VERTICAL / HORIZONTAL SURFACES

Ferrara V
VERTICAL
SURFACES



Ferrara H
HORIZONTAL
SURFACES



4.75L (4L + 0.75L) Bi-material

Colourless polyurethane water-based varnish with matte finish. It is a sealing layer for lime coating walls protection (Ferrara H) and floors (Ferrara V) made with lime coatings. It is served in bi-material format (2 products).

| | |
|----------------------------|---|
| PERFORMANCE (per coat) | 120g/m ² (Ferrara V) |
| PERFORMANCE (per coat) | 130g/m ² (Ferrara H) |
| DRYING (to touch) | 2-3 hours |
| DRYING (between coats) | 4-6 hours |
| DRYING (furniture placing) | 24 hours |
| TOTAL DRYING | 4 days |
| APPLICATION TOOLS | |
| - Preparation | Electric stirrer or other suitable equipment. |
| - Application | Brush and short pile roller |
| TOOLS CLEANING | Warm soapy water |
| FINISH | Silky matte |



Low odour



Low in VOC emissions



Resistant & Durable



Washable



UV-Rays Resistant



Surfaces with lime coatings



Water-base



Ferrara V Walls



Ferrara H Floors

Kit Arezzo

Decorative kit for woods
WOOD FINISHES



Kit 6L = 0.75L + 1L + 4L

Arezzo is a protective kit to obtain high decoration finishes for wood such as fossilized or aged effect. The kit consists of the following products:

Patina (A): ecological natural patina in lime base.

Shade* (B): varnish (shade available in 4 tonalities) that gives tonality to wood. This type of product is used to obtain natural and decorative finishes for wood.

Protector (C): water-based polyurethane varnish. Highlights the beauty of the wood without altering the tonalities and contrasts of the grain. Guarantees excellent resistance to bumps, scratches and stains.

*Available shadows:



BÁLTICO

ADRIÁTICO

MEDITERRÁNEO

TIRRENO

3-STEPS APPLICATION:

(1o) Apply the PATINA diluted 1:1 by weight. Allow to dry 24 hours. (2o) Apply SHADOW diluted 1:1 by weight. Allow to dry 24 hours. (3o) Apply PROTECTOR undiluted. Allow to dry 24h for total drying.

| | |
|----------------------------|--|
| PERFORMANCE (Kit) | 24 m ² |
| DRYING (between products) | 24 hours |
| DRYING (furniture placing) | 7 days |
| APPLICATION TOOLS | Brush, roller or spray gun |
| TOOLS CLEANING | Water |
| FINISH | Matte |
| EFFECT | Aged / Fossilized |
| SHADOWS (4 shades) | Báltico, Adriático, Mediterráneo & Tirreno |



Odourless



Eco Friendly



Resistant & Durable



Fast dry



Easy to apply



Interior woods

The Colours of the Earth

Pigments & toners for paints and mortars.
Products: Siena, Venetta, Modena and Firenzza.



Liquid Toner formats: 250ml & 50ml (use with Siena & Venetta)
Solid Pigment format: 250ml (use with Modena & Firenzza)



The Textures of the Earth

Finishes for textured mortars.
Product: Firenzza.



Textures Tutorial

Discover how to create your texture:
www.graphenstone.com/Texturas/ENG.pdf



WOODSTON

GRAPHEN
STONE
The Earth Collection

Chardon

White&Colour

WOODSTON


Chardon

Transparent



Available in 0.75L

CHARDON White&Colour
Solvent-free lacquer for wood and metal surfaces. Ideal for interior and exterior. Available in white & 16 colors.

 **Finish: Glossy or satin-matte**

 **TOY Safe**



Environmentally friendly



Resistant & durable



High covering power



No odours

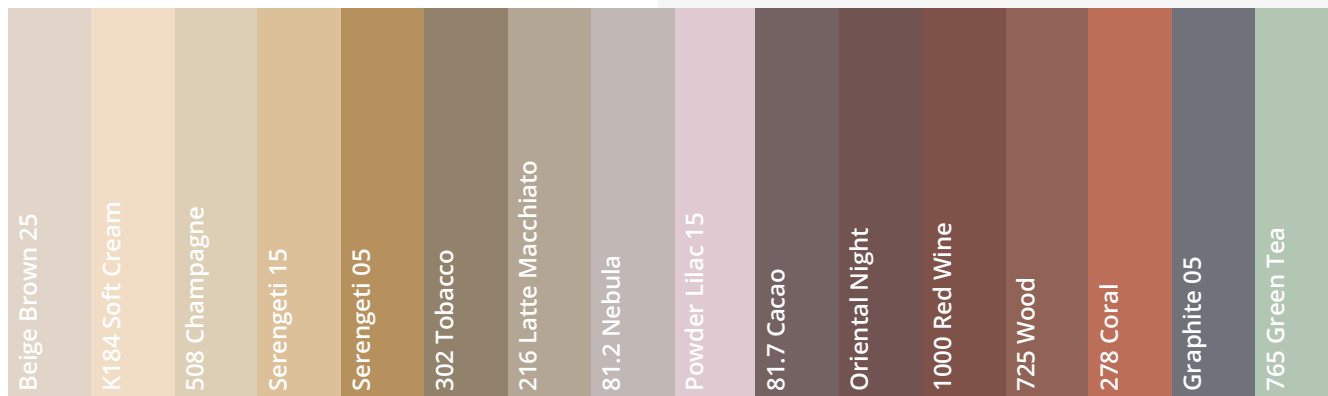


Ideal for DIY




UV resistant

* images are for illustrative purposes only.



Available in 0.75L

CHARDON Transparent
Solvent-free protective lacquer for wood and metal surfaces. Finish: Glossy or satin-matte.

 **Finish: Glossy or satin-matte**

 **TOY Safe**



Environmentally friendly



Resistant & durable



High covering power



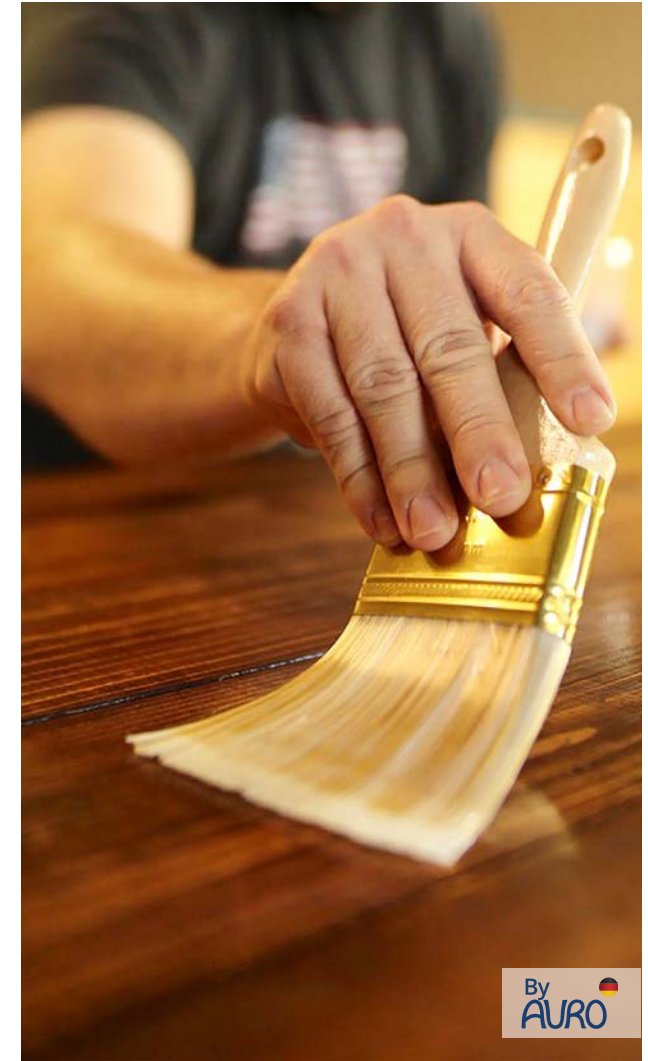
No odours



Ideal for DIY



For interior use



* images are for illustrative purposes only.



Privio
Original

WOODSTON

Privio
Transparent



Available in 0.75L

PRIVIO Original
Water-based primer free of solvents. Treatment for wooden and metal surfaces. Suitable for interior and exterior use.



Ideal prior to the application of
CHARDON White&Colour.



Environmentally
friendly



Anticorrosive /
Antioxidant



Sealer for wood
surfaces



High resistance



Excellent
adhesion



Whitish
finish



Available in 0.75L

PRIVIO Transparent
Water-based primer free of solvents. Treatment for wooden surfaces, especially for solid wood. Recommended for wood rich in active substances.



Ideal prior to the application of
CHARDON Transparent.



Environmentally
friendly



Sealer for wood
surfaces



High resistance



Excellent
adhesion



Transparent
finish

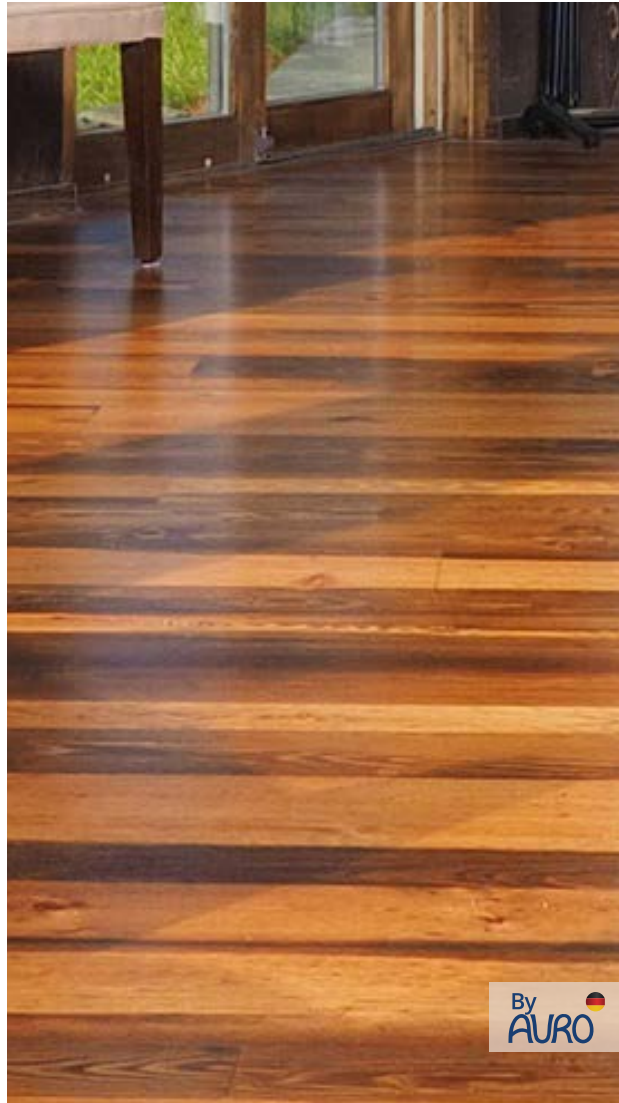


Toy safe



By
AURO

LexFloor WOODSTON Clean&Care



By AURO



Available in 0.75L or 4L

LEXFLOOR

Transparent wood varnish without solvents for interior use and a midshine finish. Ideal for wooden floors.



**Midshine
finish**



**For INTERIOR
use**



Environmentally
friendly



Resistant &
durable



Dirt repellent



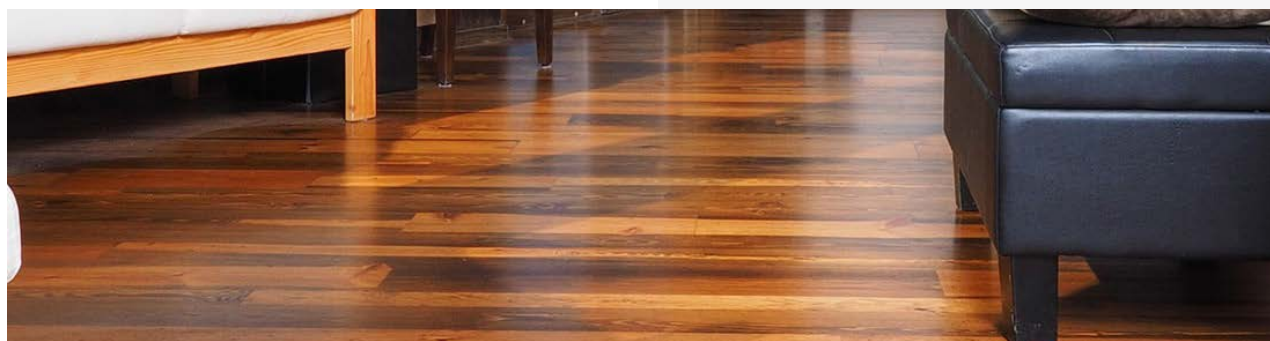
Non-slip



Odourless



Ideal for DIY



Available in 1L

CLEAN&CARE

Natural solution for the cleaning and care of wooden floors. Maintains the natural beauty of the surface.



**Ideal for all types of wooden flooring, also
for tiles, cotto, cork and laminate floors.**



Environmentally
friendly



High covering
power



Antistatic effect



Low odor



By AURO



* images are for illustrative purposes only.

* images are for illustrative purposes only.

WOODSTON

GRAPHEN
STONE
The Earth Collection

By
AURO

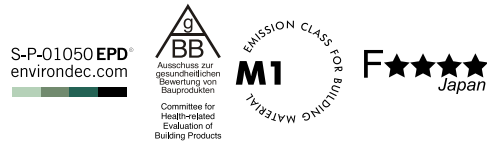


Quality

Graphenstone equates to quality & certifications

At Graphenstone we are committed to the environment which is why we produce natural materials. Among our values are ecology, nature, sustainability and respect for the environment. Our products meet the principles of a circular economy. It is in our DNA to be an innovator and creator of ecological and respectful products for the people and the environment. Ultimately, we want the construction sector to serve humans and not the inverse.

Our philosophy: acting as a benchmark for other companies, complying with the requirements of green building through economic activity. Because, for us, innovation and sustainability go hand in hand.



World's most
Certified Green
brand

Cradle To Cradle

Graphenstone has achieved Cradle to Cradle Certification, a key distinction in our products, worldwide.

Graphenstone has developed a product range with a whole green life cycle. It complies with the reuse, reduce and recycle philosophy, guaranteeing the most efficient use of materials. For that reason, Graphenstone meets the Cradle to Cradle certification programme requirements, obtaining the following levels of certification:



Cradle to Cradle Certified™
GOLD

- Biosphere Premium
- Ecosphere Premium
- AmbientPro+ Premium
- Stuki Premium
- Kratzputz Premium
- MortarBase Premium with Kalgraphin Premium
- MortarFine Premium with Kalgraphin Premium
- MortarSuper Premium with Kalgraphin Premium
- Naturglue Premium with Kalgraphin Premium
- Firenzza (material A & B)
- Modena (material A & B)



Cradle to Cradle Certified™
SILVER

- Ecosphere Colour Premium
- Biosphere Colour Premium
- AmbientPro+ Colour Premium
- Stuki Colour Premium
- Graphensonte ColorSystem GCS 980.
- Graphensonte ColorSystem GCS 322.



Material Health Certified™
GOLD

- Biosphere Premium
- Ecosphere Premium
- AmbientPro+ Premium
- Filler Premium
- Stuki Premium
- Kratzputz Premium



Global Green Tag

Graphenstone. Committed to the health of materials. Mineral paints and primers.

Global GreenTag is one of the world's most robust, trusted and widely recognised eco labels. We independently assure that every product is fitness tested and certified under one of our two leading certification programs that use world's best scientific methods.

That's why we have earned the reputation and trust of thousands of buyers, hundreds of companies and numerous green building councils, certification bodies and governments around the world.



**Green Tag Certified™
Green Rate | LEVEL A**

C B A

Biosphere Premium
Ecosphere Premium
Stuki Premium

AmbientPro+ Premium
Kratzputz Premium



**Green Tag Certified™
Health Rate | GOLD**

Biosphere Premium
Ecosphere Premium
Stuki Premium
AmbientPro+ Premium



Global GreenTag
is one of the world's most
robust, trusted & widely
recognised ecolabels for
buyers and companies.



Asthma Friendly

Graphenstone – Free of VOC emission.
Mineral paints, renders and primers.

Graphenstone is the ultimate ecological range of products, composed of natural elements that purify the air we breathe inside our homes. It is suitable for people suffering from chemical intolerance and respiratory issues like asthma. Graphenstone is recommended for indoor enclosures, hospitals, nurseries, schools, or rooms for infants and children.



Sensitive Choice
APPROVED™
**Asthma friendly
products**

- Ecosphere Premium
- Biosphere Premium
- Ambient Pro+ Premium
- Stuki Premium
- Kratzputz Premium
- MortarBase Premium
- MortarFine Premium
- MortarSuper Premium
- Naturglue Premium
- Kalgraphin Premium

Sustainable Materials

Graphenstone® lime based product contribute to the achievement of the certifications: LEED v4, LEED v2009 and BREEAM ES.

Mortars and paints with lime base. The porous nature of the lime ensures the breathability of the walls, avoiding humidity and creating safe and healthy environments.



FAMILY COMPONENTS:

- Biosphere Premium
- Ecosphere Premium
- AmbientPro+ Premium
- Filler Premium
- Stuki Premium
- Kratzputz Premium

Summary table: Environmental parameters in which the material has a specific contribution. Detailed in the files of the respective environmental certifications GREEN, LEED and BREEAM

| Support documents | | Certifications: DAP, CSR, REACH | | Self-declarations | | Potential | |
|----------------------|--|---------------------------------|---------------------------|----------------------------|-------------------------|-----------------------|------------------|
| Plot Mobility | | Solar Reflectance Index SRI | Rain water management | Ext. lighting control | ... | | |
| Energy Atmosphere | | Embedded energy | Greenhouse effect gases | Energy demand reduction | Equipment efficiency | Other polluting gases | Renewable energy |
| Materials | | Accredited location | Recycling pre-consumption | Recycling post-consumption | Potencial reutilización | Certified wood | Waste |
| Water | | Consumption <reference | Water management | ... | | | |
| Interior Environment | | Low VOC emission | Low formaldehyde emission | Comfort control | Lighting comfort | Acoustic comfort | Air quality |
| Innovation | | Innovation Design | ... | | | | |



More information:
www.materiales.gbce.es

Awards

The recognition of Graphenstone's work has been awarded around the world in categories such as: Innovation, Construction, Environment or Product Design.



"Business Quality"
European Association of Economy & Competitiveness. Spain - Dec. 2018



"Corporate Social Responsibility"
Andalucía Management Awards Spain- Nov. 2018



"Niche company of the year"
ACQ5 Global Awards - Jun. 2018



"Germany Trade & Invest Award for International Expansion"
European Business Awards Belgium - Apr. 2018



"Product design, Commercial & Industrial"
London Design Awards United Kingdom - Nov. 2017



"Gold Star"
Professional Excellence Award Spain - Nov. 2017



"Innovative Construction Solution of Spain"
Technology Awards - La Razón Spain - Nov. 2017



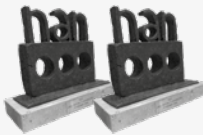
"The Best Sustainable Element"
Best Sustainable Element Award Denmark - Oct. 2017



"Environmental Commitment"
"Andalucía Excelente" Awards Spain - Oct. 2017



"Innovation product"
Green Interior Awards Australia - Jul. 2017



"Architecture & Construction"
IX NAN / XI NAN Awards Spain - Nov. 2015 y 2017



"Innovation & Sustainability in Construction"
Beyond Building Construmat. Spain - May. 2015

SHOWROOMS

The Gallery

INFORMATION & BOOKINGS
info@graphenstone.com

The essence of Graphenstone materialised in a showroom. A journey through tradition and innovation that is completed within a commercial space, where sustainable materials, textures and finishes are the protagonists.

A multisensory experience that appeals to the client's senses, who can appreciate, touch and feel the quality and properties that the brand offers.



SHOWROOMS

EcoBuilding

INFORMATION & BOOKINGS
info@graphenstone.com

A space concept for painters, applicators and decorators. Designed to bring new sustainable materials closer to the decoration and bio-construction sector.

A showroom created to learn first-hand works and emblematic projects made with Graphenstone products.



Global

International Delegations

Europe:

Germany
Austria
Benelux
Spain
France
Italy
Portugal
UK
Switzerland
Ukraine

Asia & Oceania:

Australia
China
South Korea
Philippines
India
Japan
Malaysia
New Zealand
Singapore
Thailand
Vietnam

Middle East:

Turkey
Kuwait
United Arab Emirates
Qatar

North America:

U.S.
Canada

Central America:

Panama
Mexico

South America:

Bolivia
Chile
Colombia
Costa Rica
Ecuador
Peru

Africa:

Cameroon



Showrooms

Exhibition halls & Stores

The Gallery / Seville (Spain)
Bioconstruction & EcoBuilding / Seville (Spain)
Showroom-Store/ Macao (China)
Showroom Ontario / Ontario (Canada)

Factories

Production centers

Europe:

Seville (Spain)

Asia & Oceania:

China
Malaysia
Australia

Central America:

Panama



www.graphenstone.com

#PaintDifferent



GRAPHENSTONE

THE ORIGINAL & AUTHENTIC

Graphenstone Canada
17-280 Edward Street E. St. Thomas
Ontario N5P 4C2
Phone: 1-519-488-5200
Toll Free: 1-888-840-0153
info.canada@graphenstone.com
www.graphenstone.ca